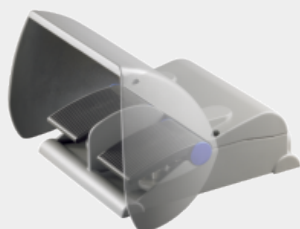


Archive



Z2FH232-11/11

- Metal enclosure
- double-pedal type
- 2 contacts per pedal
- High level of stability
- 2 cable entries M 25 x 1.5
- Low operating height of pedal
- Protective shield with wide opening

Data

General data

Product name	2F 232
Standards	EN 60947-5-1 DIN VDE 0660-200 BG-GS-ET-15
Enclosure material	Aluminium
Enclosure coating material	powder-coated
Material of the cover	Aluminium
Material of the pedal	Glass-fibre, reinforced thermoplastic
Material of the protective shield	Aluminium
Colour of the housing	RAL 9006 (White aluminum)
Gross weight	3,610 g

K.A. Schmersal GmbH & Co. KG, Möddinghofe 3, D-42279 Wuppertal

The details and data referred to have been carefully checked. Images may diverge from original. Further technical data can be found in the manual. Technical amendments and errors possible.

Generated on 122020-12-02T02:52:12+01:000212Europe/BerlinWed, 02 Dec 2020 02:52:12
+010012amWednesday.02am31Europe/BerlinCET5212Europe/BerlinDecember2020Wed, 02 Dec 2020
02:52:12 +010012am31