



Timing relay, Multifunction Phased-out product !!! For further information, please contact our sales department Spring-type terminal 1 change-over contact, ansprechverzögert 5 s...100 s 24 V AC/DC/200...240 V AC at 50/60 Hz AC

| | |
|---|------------------------|
| product brand name | SIRIUS |
| product designation | timing relay |
| product type designation | 3RP15 |
| General technical data | |
| product component | |
| • relay output | Yes |
| • semi-conductor output | No |
| product extension required remote control | No |
| product extension optional remote control | No |
| power loss [W] maximum | 2 W |
| insulation voltage for overvoltage category III according to IEC 60664 with degree of pollution 3 rated value | 300 V |
| test voltage for isolation test | 2 kV |
| degree of pollution | 3 |
| surge voltage resistance rated value | 4 000 V |
| protection class IP | IP20 |
| shock resistance according to IEC 60068-2-27 | 11g / 15 ms |
| vibration resistance according to IEC 60068-2-6 | 10 ... 55 Hz / 0.35 mm |
| mechanical service life (switching cycles) typical | 10 000 000 |
| electrical endurance (switching cycles) at AC-15 at 230 V typical | 100 000 |
| adjustable time | 5 ... 100 s |
| relative setting accuracy relating to full-scale value | 5 % |
| thermal current | 5 A |
| recovery time | 150 ms |
| reference code according to IEC 81346-2 | K |
| relative repeat accuracy | 1 % |
| influence of the surrounding temperature | ±5 % |
| power supply influence | ±1 % |
| Substance Prohibitance (Date) | 05/28/2009 |
| Control circuit/ Control | |
| type of voltage of the control supply voltage | AC/DC |
| control supply voltage 1 at AC | |
| • at 50 Hz rated value | 24 V |
| • at 60 Hz rated value | 24 V |
| control supply voltage 2 at AC | |
| • at 50 Hz | 200 ... 240 V |
| • at 60 Hz | 200 ... 240 V |
| control supply voltage frequency 1 | 50 ... 60 Hz |
| control supply voltage 1 | |

| | |
|---|-------------|
| <ul style="list-style-type: none"> • at DC rated value | 24 V |
| operating range factor control supply voltage rated value at DC <ul style="list-style-type: none"> • initial value • full-scale value | 0.85 1.1 |
| operating range factor control supply voltage rated value at AC at 50 Hz <ul style="list-style-type: none"> • initial value • full-scale value | 0.85 1.1 |
| operating range factor control supply voltage rated value at AC at 60 Hz <ul style="list-style-type: none"> • initial value • full-scale value | 0.85 1.1 |

Switching Function

| | |
|--|--|
| switching function <ul style="list-style-type: none"> • ON-delay • ON-delay/instantaneous contact • passing make contact • passing make contact/instantaneous contact • OFF delay | Yes No No No No |
| switching function <ul style="list-style-type: none"> • flashing symmetrically with interval start/instantaneous • flashing symmetrically with interval start • flashing symmetrically with pulse start/instantaneous • flashing symmetrically with pulse start • flashing asymmetrically with interval start • flashing asymmetrically with pulse start | No No No No No No |
| switching function <ul style="list-style-type: none"> • star-delta circuit with delay time • star-delta circuit | No No |
| switching function with control signal <ul style="list-style-type: none"> • additive ON-delay • passing break contact • passing break contact/instantaneous • OFF delay • OFF delay/instantaneous • pulse delayed • pulse delayed/instantaneous • pulse-shaping • pulse-shaping/instantaneous • additive ON-delay/instantaneous • ON-delay/OFF-delay/instantaneous • passing make contact • passing make contact/instantaneous contact | No No No No No No No No No No No No No No |
| switching function of interval relay with control signal <ul style="list-style-type: none"> • retrotriggerable with deactivated control signal/instantaneous contact • retrotriggerable with switched-on control signal • retrotriggerable with switched-on control signal/instantaneous contact • retriggerable with deactivated control signal | No No No No |

Short-circuit protection

| | |
|---|-----------------|
| design of the fuse link for short-circuit protection of the auxiliary switch required | fuse gL/gG: 4 A |
|---|-----------------|

Auxiliary circuit

| | |
|---|--------|
| material of switching contacts | AgSnO2 |
| number of NC contacts <ul style="list-style-type: none"> • delayed switching • instantaneous contact | 0 0 |
| number of NO contacts | |

| | |
|---|--|
| <ul style="list-style-type: none"> • delayed switching • instantaneous contact | 0 |
| number of CO contacts | |
| <ul style="list-style-type: none"> • delayed switching • instantaneous contact | 1 |
| operational current of auxiliary contacts at AC-15 | |
| <ul style="list-style-type: none"> • at 24 V • at 250 V | 3 A |
| operational current of auxiliary contacts at DC-13 | |
| <ul style="list-style-type: none"> • at 24 V • at 125 V • at 250 V | 1 A |
| operating frequency with 3RT2 contactor maximum | 5 000 1/h |
| contact reliability of auxiliary contacts | one incorrect switching operation of 100 million switching operations (17 V, 5 mA) |
| contact rating of auxiliary contacts according to UL | R300 / B300 |
| Inputs/ Outputs | |
| product function | |
| <ul style="list-style-type: none"> • non-volatile | No |
| Electromagnetic compatibility | |
| EMC emitted interference according to IEC 61812-1 | EN 61000-6-4(3) |
| EMC immunity according to IEC 61812-1 | EN 61000-6-2 |
| conducted interference | |
| <ul style="list-style-type: none"> • due to burst according to IEC 61000-4-4 • due to conductor-earth surge according to IEC 61000-4-5 • due to conductor-conductor surge according to IEC 61000-4-5 | 2 kV network connection / 1 kV control connection |
| field-based interference according to IEC 61000-4-3 | 10 V/m |
| electrostatic discharge according to IEC 61000-4-2 | 4 kV contact discharge / 8 kV air discharge |
| Safety related data | |
| protection class IP on the front according to IEC 60529 | IP20 |
| type of insulation | Basic insulation |
| category according to EN 954-1 | none |
| Connections/ Terminals | |
| product component removable terminal for auxiliary and control circuit | Yes |
| type of electrical connection for auxiliary and control circuit | spring-loaded terminals |
| type of connectable conductor cross-sections | |
| <ul style="list-style-type: none"> • solid • finely stranded with core end processing • finely stranded without core end processing • at AWG cables solid • at AWG cables stranded | 2x (0.25 ... 1.5 mm ²) |
| connectable conductor cross-section | |
| <ul style="list-style-type: none"> • solid • finely stranded with core end processing • finely stranded without core end processing | 2 x (0.25 ... 1.5 mm ²) |
| AWG number as coded connectable conductor cross section | |
| <ul style="list-style-type: none"> • solid • stranded | 2x (0.25 ... 1.5 mm ²) |
| | 2x (24 ... 16) |
| | 2x (24 ... 16) |
| | 0.3 ... 1.5 mm ² |
| | 0.3 ... 1.5 mm ² |
| | 0.3 ... 1.5 mm ² |
| | 24 ... 16 |
| | 24 ... 16 |
| Installation/ mounting/ dimensions | |
| mounting position | any |
| fastening method | screw and snap-on mounting onto 35 mm standard mounting rail |
| height | 84 mm |
| width | 22.5 mm |
| depth | 91 mm |
| required spacing | |
| <ul style="list-style-type: none"> • with side-by-side mounting | |

| | |
|----------------------|------|
| — forwards | 0 mm |
| — backwards | 0 mm |
| — upwards | 0 mm |
| — downwards | 0 mm |
| — at the side | 0 mm |
| • for grounded parts | |
| — forwards | 0 mm |
| — backwards | 0 mm |
| — upwards | 0 mm |
| — at the side | 0 mm |
| — downwards | 0 mm |
| • for live parts | |
| — forwards | 0 mm |
| — backwards | 0 mm |
| — upwards | 0 mm |
| — downwards | 0 mm |
| — at the side | 0 mm |

Ambient conditions

| | |
|---|----------------|
| installation altitude at height above sea level maximum | 2 000 m |
| ambient temperature | |
| • during operation | -25 ... +60 °C |
| • during storage | -40 ... +85 °C |
| • during transport | -40 ... +85 °C |
| relative humidity during operation | 10 ... 95 % |

Certificates/ approvals

General Product Approval

EMC



[Confirmation](#)



Declaration of Conformity

Test Certificates

Marine / Shipping



EG-Konf.

[Type Test Certificates/Test Report](#)



LRS



RINA

Marine / Shipping

other

Railway



[Miscellaneous](#)

[Confirmation](#)

[Special Test Certificate](#)

Further information

Information- and Downloadcenter (Catalogs, Brochures,...)

<https://www.siemens.com/ic10>

Industry Mall (Online ordering system)

<https://mall.industry.siemens.com/mall/en/en/Catalog/product?mlfb=3RP1513-2AP30>

Cax online generator

<http://support.automation.siemens.com/WW/CAXorder/default.aspx?lang=en&mlfb=3RP1513-2AP30>

Service&Support (Manuals, Certificates, Characteristics, FAQs,...)

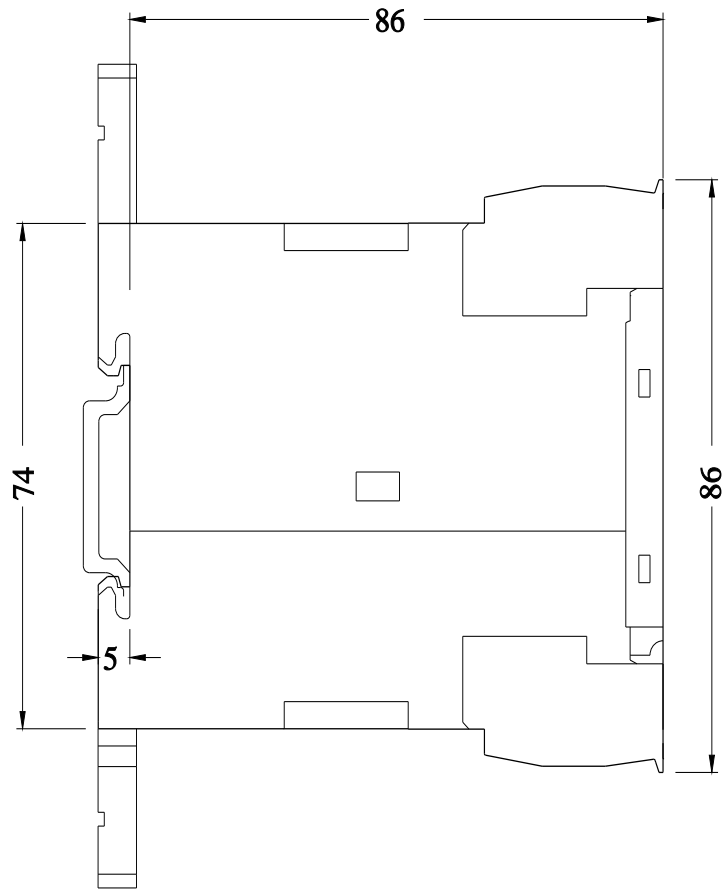
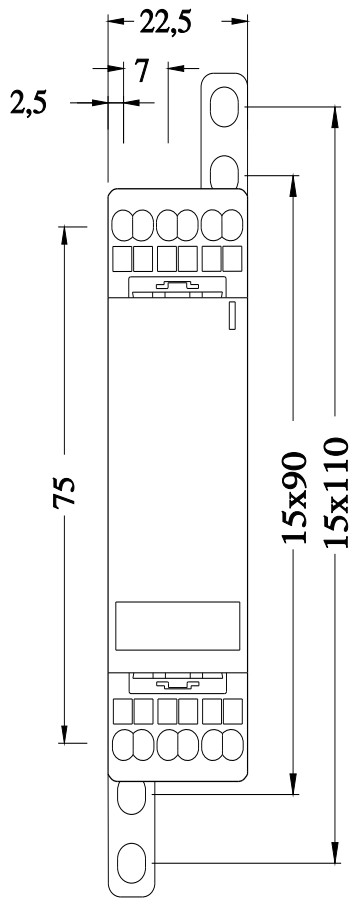
<https://support.industry.siemens.com/cs/ww/en/ps/3RP1513-2AP30>

Image database (product images, 2D dimension drawings, 3D models, device circuit diagrams, EPLAN macros, ...)

http://www.automation.siemens.com/bilddb/cax_de.aspx?mlfb=3RP1513-2AP30&lang=en

Characteristic: Derating

<https://support.industry.siemens.com/cs/ww/en/ps/3RP1513-2AP30/manual>



last modified:

10/13/2021 