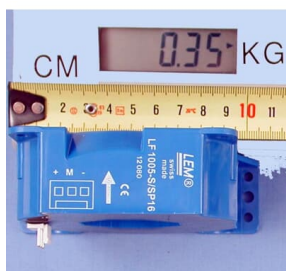


PRODUCT-DETAILS

64572881

LF 1005-S/SP16; CURRENT TRANSDUCER



General Information

Product ID	64572881
ABB Type Designation	LF 1005-S/SP16
Catalog Description	LF 1005-S/SP16; CURRENT TRANSDUCER
Long Description	LF 1005-S/SP16

Ordering

Core Credit	0.00
Country of Origin	China (CN) India (IN)
Customs Tariff Number	85043129
Invoice Description	CURRENT TRANSDUCER
Made To Order	No
Minimum Order Quantity	1 piece
Order Multiple	1 piece
Part Type	New
Quote Only	No
Replaced Product ID (OLD)	2UEA002111 3AXD50000028919 3BHB020938R0001 3AFE64572881
Selling Unit of Measure	piece
Stocked At (Warehouses)	FIPSEXP US Drive Services SGRDC002EXP

CNIAB001EXPU
 SGIND002EXPU
 DUABB003EXPU
 JPABB001EXPU
 AUABB024EXPU
 INABB010EXPU

Container Information

Gross Volume 0.136 dm³

Dimensions

Product Net Height	60 mm
Product Net Length	35 mm
Product Net Weight	0.54 kg
Product Net Width	65 mm

Technical

Technical Information +-24V;1000 A;1:5000 1000ARMS, 2020APEAK +/-24V, 1:5000

Additional Information

Product Name	CURRENT TRANSDUCER
Short Description	-

Where Used (as part of "kit")

Identifier	Description	Type
68257662		Kit
ACS550-02V2		Kit
ACS800-02-7V3		Kit
ACS800-02V4		Kit
ACS800-104A		Kit
ACS800-104BV2		Kit
ACS800-104C		Kit
ACS800-104DV2		Kit
ACS800-104LCA		Kit
ACS800-104LCB		Kit

Categories

Drives → Services → Spares and Consumables → Parts

