

Product data sheet

Characteristics

TSXSCP111C

PCMCIA card type III - for Atrium co-processor/
Premium processor - RS232 D

Product availability : Non-Stock - Not normally stocked in distribution facility

Price* : 707.25 USD



ⓘ Discontinued

Main

Range of product	Modicon Premium Automation platform
Accessory / separate part category	Communication accessories
Accessory / separate part type	PCMCIA card
Product compatibility	TSX37-21/22 TSXSCY21601
Accessory / separate part destination	Atrium co-processor Premium processor

Complementary

Memory type	PCMCIA card type III
Physical interface	RS232 D
Communication port protocol	Modbus Uni-Telway Character mode
Current consumption	140 mA 5 V DC
Net Weight	0.23 lb(US) (0.105 kg)

Environment

Protective treatment	Conformal coating Humiseal 1A33
----------------------	---------------------------------

Ordering and shipping details

Category	22558 - TSX PREMIUM, ATRIUM & PL7 PRO
Discount Schedule	PC22
GTIN	03595863960266
Nbr. of units in pkg.	1
Package weight(Lbs)	1 lb(US) (0.45 kg)
Returnability	No
Country of origin	FR

* Price is "List Price" and may be subject to a trade discount – check with your local distributor or retailer for actual price.

Packing Units

Package 1 Height	1.38 in (35.000 mm)
Package 1 width	6.10 in (155.000 mm)
Package 1 Length	6.69 in (170.000 mm)

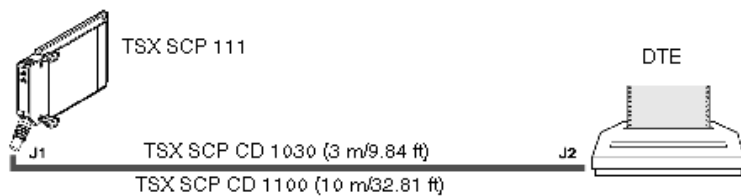
Contractual warranty

Warranty	18 months
----------	-----------

Point to Point Connection in Character Mode (DTE to DTE)

Cabling Accessories

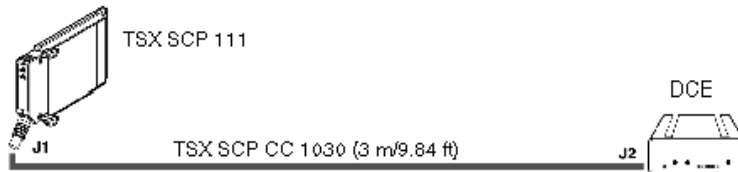
The RS 232 physical support card is inserted either in the processor or in the TSXSCY21601 module. It can be connected to a DTE (Data Terminal Equipment) such as a terminal or a printer through a TSXSCPCD1030 or a TSXSCPCD1100 cable.



Connection to a Uni-Telway, Modbus or Character Mode DCE

Cabling Accessories

The PCMCIA card can be connected to a Uni-Telway, Modbus or Character Mode DCE (Data Circuit-terminating Equipment) such as a modem through a TSXSCPCC1030 cable.



TSXSCP111C is replaced by:



Standard environment BMXNOM0200

Serial link module with 2 RS-485/232 ports in Modbus and Character mode

Qty 1

Reason for Substitution: End of life | Substitution date: 31 December 2017
