

Please use this manual change with the following user's manual.

1. Applicable User's Manual

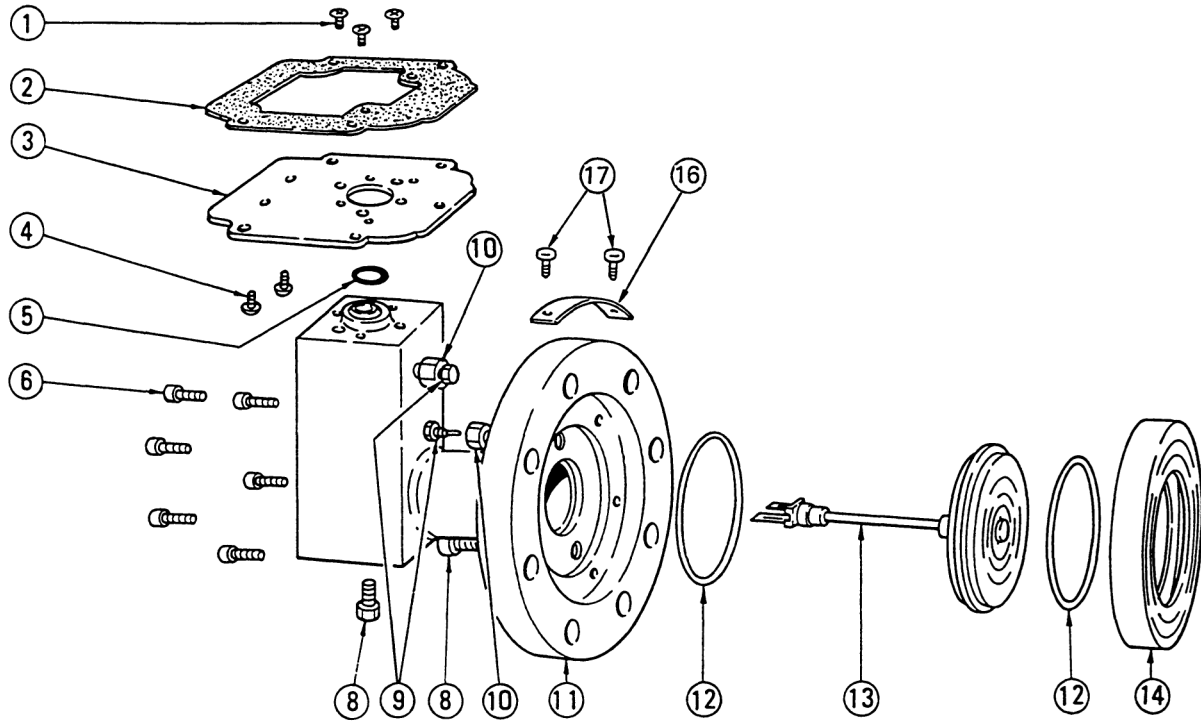
IM No.	Edition	Products
IM 02C01D02-01E	5th	Y/13FA, Y/13FEA, Y/15FA

2. Contents of change

Item	Applicable part	Contents of change
(1)	2.3 Standard Specification Cover	Delete "Gasketed for National Electrical Manufacturers Association (NEMA) (USA) Type3 weatherproof service."
(2)	2.3 Standard Specification Degrees of Protection	Add "Degrees of Protection: IP53 (Equivalent to NEMA 3)"
(3)	2.5 Options (and Combinations) Air set	Delete option code GAS -F and NAS-F
(4)	CMPL 02C01D01-01E CMPL 02C01D03-01E	Please replace the current edition with the attached new edition.

Customer Maintenance Parts List

Model Y/15FA (Style C) Pneumatic Flange Mounting Differential Pressure Transmitter



F0601.ai

Item	Part No.	Qty	Description	Item	Part No.	Qty	Description
1	0012691	3	8-32×3/8 F.H.Screw	9	D0114PB	2	Vent Screw (SUS316 Stainless steel)
2	F9100AT	1	Gasket	10	F9101AB	2	Vent Plug (JIS connection) (SUS316B)
3	U0102RC	1	Plate		D0114PA	2	Vent Plug (ANSI connection) (SUS316B)
4	X0100SB	2	1/4-28×3/8 R.H.Screw	11	See Table1	1	Flange Assembly
5	Below	1	*O-Ring	12	F9202QW	2	*Gasket (standard)
	U0102MY		Silicone Elastomer (standard)		F9101ZL	2	*Gasket (for /OSW or /OSFC)
	005165Z		Glass Fiber Filled Teflon (for /DG5 or /GFT)	13	Below	1	Capsule Assembly
	F9101ZJ		Glass Fiber Filled Teflon (for /OSW or /OSFC)		N0150XT		Standard
	F9202LZ		Neoprene (for ammonia service)		N0151VB		For /OSFC
6	X0100YC	6	Screw (SCM435)		F9200GA		High viscosity fill (/HVC)
8	Below	2	Plug (SUS316 Stainless Steel)	14	D0120PP	1	Ring (SUS316 Stainless Steel)
	F9200CS		JIS connection	16	—	1	Tag Plate
	D0114RZ		ANSI connection	17	0046879	2	Self-tapping Screw
				-	F9145FX	1	FEP Teflon Diaphragm Protector
				-	F9145YN	2	Oil, 10cc (for protector)

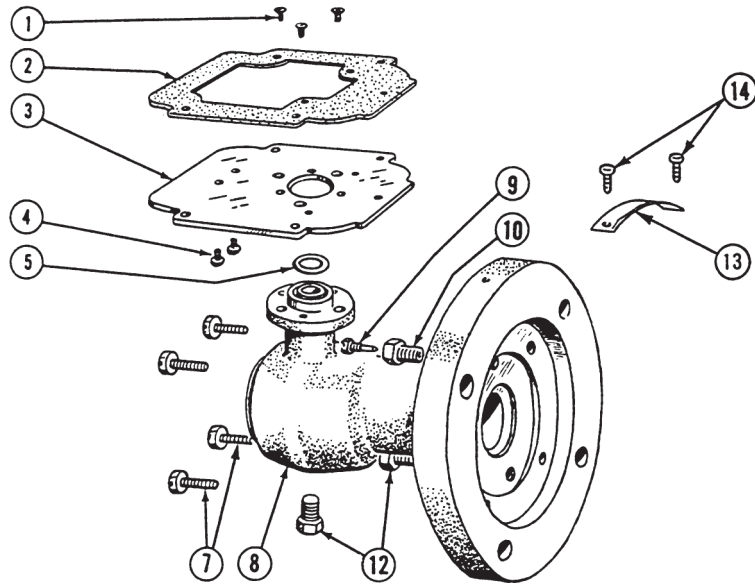
Table 1. Flange Assembly Part Number

Flange Rating	Material: SUS 316 Stainless Steel	
	JIS Connection	ANSI Connection
JIS 10K-150A ANSI 6"-150 lb	F9101HF F9101HB	— A072317

*Denotes parts more frequently replaced.

Customer Maintenance Parts List

Models Y/13FA and Y/13FEA (Style C) Pneumatic Flange Mounting Differential Pressure Transmitters

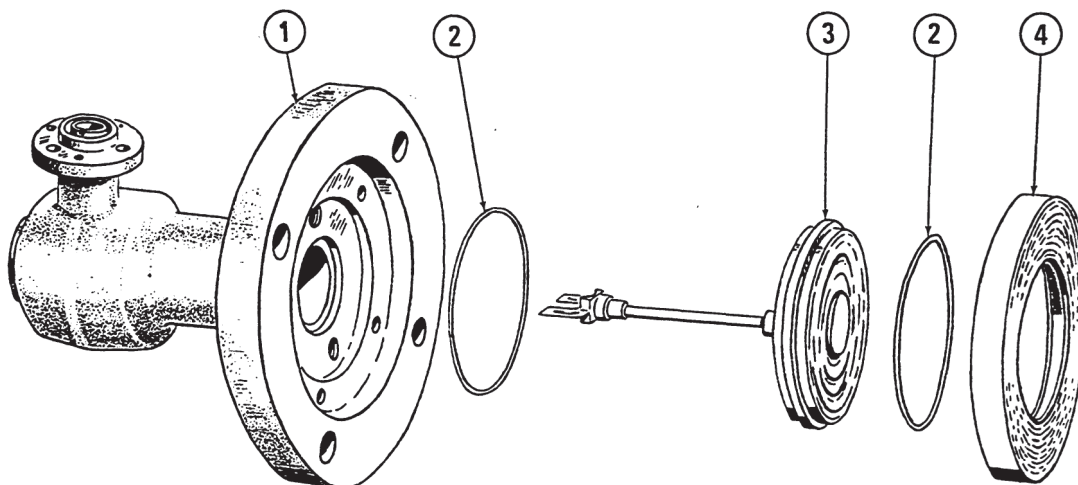


F0701.ai

Item	Part No.	Qty	Description	Item	Part No.	Qty	Description
1	0012691	3	8-32×3/8 F.H.Screw	8	—	1	Flange Assembly (see Page 2 or 3)
2	F9100AT	1	Gasket	9	D0114PB	1	Vent Screw (SUS316 Stainless steel)
3	U0102RC	1	Plate	10	F9101AB	1	Vent Plug (JIS connection) (SUS316B s.s)
4	X0100SB	2	1/4-28×3/8 R.H.Screw		D0114PA	1	Vent Plug (ANSI connection) (SUS316B s.s)
5	Below	1	*O-Ring	12	Below F9200CS D0114RZ	2	Plug (SUS316 Stainless Steel) JIS connection ANSI connection
	U0102MY		Silicone Elastomer (standard)	13	—	1	Tag Plate
	0051652		Glass Fiber Filled Teflon (for /DG5 or /GFT)	14	0046879	2	Screw
	F9101ZJ		Glass Fiber Filled Teflon (for /OSW or OSFC)	Below	Below	1	FEP Teflon Diaphragm Protector For Model Y/13FA Medium Range
7	F9202LZ	4	Neoprene (for ammonia service)	Below	F9145AL	1	For Model Y/13FA High Range
	Below		Cap Screw (SCM435)	-	F9145AM	1	Oil, 10 cc (for protector)
	X0100YC		For Model Y/13FA		F9145YN		
	X0100YW		For Model Y/13FEA, JIS				
	F9147AE		For Model Y/13FEA, ANSI 150 lbs				
	X0100MM		For Model Y/13FEA, ANSI 300 lbs				

* Denotes parts more frequently replaced.

Model Y/13FA Flanged Cells

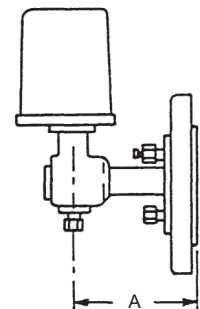


F0702.ai

Item	Part No.	Qty	Description
1	See Table 1	1	Flange Assembly
2	Below	2	Gasket
	F9202XQ		Teflon Coating SUS 316L S.S. (standard)
	D0114TP		Teflon (PTFE) (for special material diaphragm assembly)
	F9101ZK		Teflon Coating SUS 316L S.S. (for /OSW or /OSFC)
3	See Table 2	1	Diaphragm Assembly
4	See Table 3	1	Ring

Table 1. Flange Assembly Part Number.

Extension A	Flange Rating	Body Material (SUS 316 Stainless Steel)	
		JIS Connection	ANSI Connection
5"	JIS 10K-80A	F9101BQ	—
	ANSI 3"-150 lb	F9101BB	D0117ZE
	JIS 20K-80A	F9101HK	—
	ANSI 3"-300 lb	F9101BE	D0120EB
8"	JIS 10K-80A	F9101BR	—
	ANSI 3"-150 lb	F9101BD	D0120BL
	JIS 20K-80A	F9101HL	—
	ANSI 3"-300 lb	F9101BF	D0120EF



F0703.ai

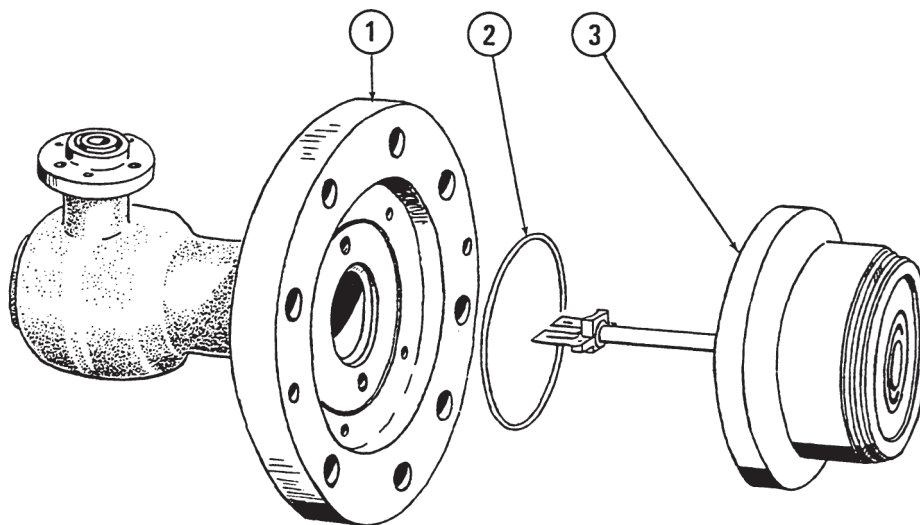
Table 2. Diaphragm Assembly Part Number.

Extension A	Body Material (SUS 316 Stainless Steel)		Wetted Parts Material
	Medium Range	High Range	
5"	F9200PA	F9200PN	SUS 316L S.S.(standard) SUS 316L S.S.(for /OSFC) SUS 316L S.S.(for /HVC) Hastelloy C (D-CSC) Tantalum Sheathed (D-TSO)
	F9200XW	N0151UY	
	F9200TN	—	
	F9200WH	A081815	
	A0104XE	—	
8"	F9200PB	F9200PP	SUS 316L S.S.(standard) SUS 316L S.S.(for /OSFC) SUS 316L S.S.(for /HVC) Hastelloy C (D-CSC) Tantalum Sheathed (D-TSO)
	F9200XX	N0151VA	
	F9200TP	—	
	F9200WL	A092353	
	F9200HR	—	

Table 3. Retaining Ring Part Number.

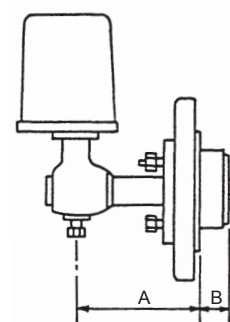
Part No.	Material
D0117CZ	SUS 316L S.S. (standard)
D0120RZ	Tantalum Sheathed (D-TSO)
D0120CZ	Hastelloy C (D-CSC)

Model Y/13FEA Flanged Cells with Capsule Extension



F0704.ai

Item	Part No.	Qty	Description
1	See Table 4	1	Flange Assembly
2	D0120FF	1	Gasket (standard)
	A090658	1	Gasket (for /DG5)
	F9101ZW	1	Gasket (for /OSW)
3	See Table 5	1	Extended Diaphragm Assembly



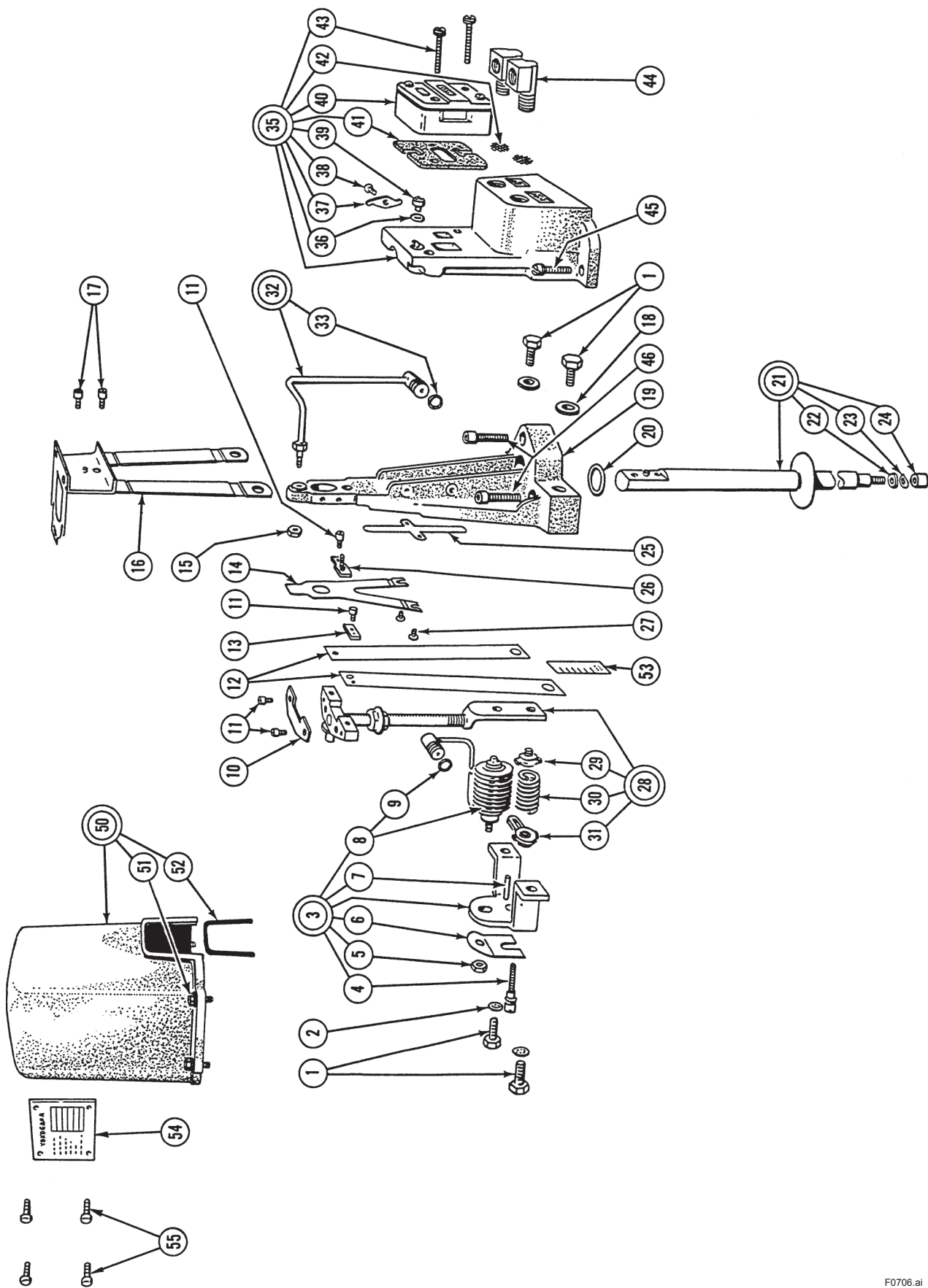
F0705.ai

Table 4. Flange Assembly Part Number.

Extension A	Flange Rating	Body Material (SUS 316 Stainless Steel)	
		JIS Connection	ANSI Connection
5"	JIS 10K-100A	F9101CN	—
	ANSI 4"-150 lb	F9101CB	D0120BX
	JIS 20K-100A	F9101CS	—
	ANSI 4"-300 lb	F9101CC	A081696

Table 5. Diaphragm Assembly Part Number.

Extension B	Body Material (SUS 316 Stainless Steel)		Wetted Parts Material
	Medium Range	High Range	
2"	F9100LA	F9200FG	SUS 316L Stainless Steel
4"	F9100LF	F9200FH	SUS 316L Stainless Steel
6"	F9100LK	F9200FJ	SUS 316L Stainless Steel



F0706.ai

Force Balance Unit (items 1 through 33)

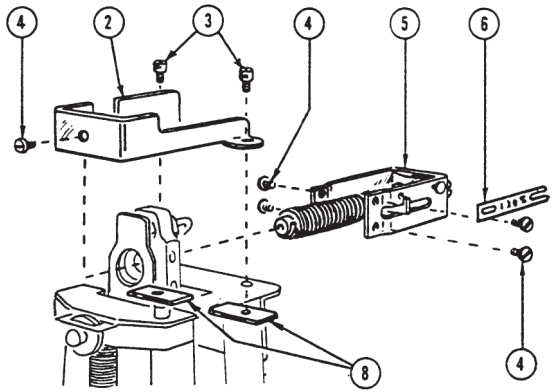
Part No.N0999SH: with Stainless Steel Force Bar (standard)

Part No.N0999SE: Low Spans (for Models Y/13FA-[] /LD
and Y/13FEA-[] /LD)**Other Parts (items 35 through 55)**

Item	Part No.	Qty	Description	Item	Part No.	Qty	Description
1	U0102LN	4	1/4-28 × 1/2 Hex H.Screw	35	D0124JD	1	Relay Mounting Assembly (ANSI connection)
2	0048219	2	Lockwasher		F9101DF	1	Relay Mounting Assembly (JIS connection)
3	U0119TA	1	Bracket Assembly (N0999SH)				
	U0119TF	1	Bracket Assembly (N0999SE)	36	A037744	1	*O-Ring
4	U0102FY	1	Screw				
5	0017611	1	Nut	37	U0102MF	1	Clamp
6	U0102FZ	1	Spring	38	X0100AA	1	6-32 × 7/32 Fil.H.Screw
7	U0102NA	1	Pin	39	D0124JG	1	*Restrictor
8	U0119TC	1	Bellows Assembly (N0999SH)	40	F9138YA	1	*Pneumatic Amplifier, 80A
9	D0123MZ	1	*O-Ring	41	C0100EM	1	*Gasket
8	U0119TG	1	Bellows Assembly (N0999SE)	42	U0103FP	2	*Screen
9	D0123MZ	1	*O-Ring	43	X0116CS	2	10-32 × 1 Pan H.Screw
10	U0102KP	1	Plate	44	0050506	2	Elbow (ANSI connection)
11	X0100MK	4	6-32 × 3/16 Socket H.Cap Screw		0050509	2	Elbow (JIS connection)
12	U0102KL	2	Flexure	45	0006535	2	10-32 × 3/4 Fil.H.Screw
13	U0102LP	1	Plate	46	X0100YC	3	1/4-28 × 7/8 Cap Screw
14	N0999MH	1	Flapper	50	U0102RA	1	Cover Assembly
15	X0104EB	1	Nut	51	X0100RP	4	10-32 × 9/16 Hex H.Screw
16	N0999FM	1	Flexure Assembly	52	U0102MS	1	Gasket
17	X0100ML	2	8-32 × 1/4 Socket H.Cap Screw	53	Below	1	Scale
18	X0166MX	2	Washer		F9103AE		for M Range (kPa) standard
19	N0999ML	1	Base		F9103AF		for H Range (kPa) standard
20	N0143XN	1	O-Ring		D0117BL		for M Range (psi)
21	N0143NL	1	Force Bar Assembly (SUS 316 s.s.)		D0117FC		for H Range (psi)
22	N0143SB	1	Washer (SUS 316 s.s.)		D0117BL-J		for M Range (kgf/cm ²)
23	U0102MX	1	Dished Washer (inconel)		D0117FC-J		for H Range (kgf/cm ²)
24	U0102LE	1	Nut (SUS 316 s.s.)	54	—	1	Data Plate
				55	0046879	4	Self-tapping Screw
25	N0142NY	1	Spacer	—	N0138GA	1	Dashpot Assembly (not shown) (for /OSFC)
26	U0102TE	1	Bracket Assembly				
27	0023442	2	3-48 × 3/16 Fil.H.Screw				
28	N0999MP	1	Range Bar Assembly (N0999SE)				
	N0999QA	1	Range Bar Assembly (N0999SH)				
29	U0102KR	1	Spring Holder				
30	N0999MG	1	Spring (N0999QA)				
	N0999MC	1	Spring (N0999MP)				
31	U0102KC	1	Spring Holder				
32	U0119TB	1	*Nozzle Assembly				
33	D0123MZ	1	*O-Ring				

* Denotes parts more frequently replaced.

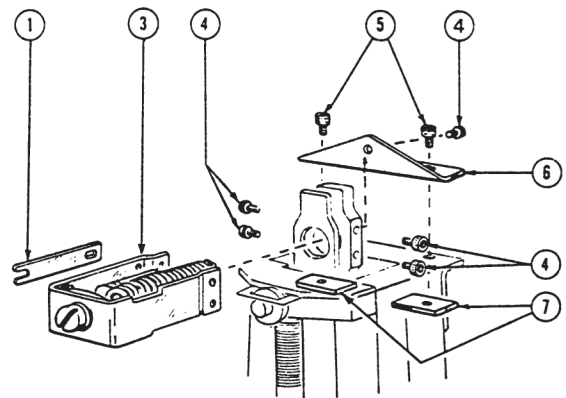
**Zero Elevation Kit
(Suffix Code : L)**



F0707.ai

Item	Part No.	Qty	Description
-	U0122BS	1	Zero Elevation Kit
2	U0122BT	1	Bracket
3	A0100YC	2	6-32 × 1/4 Socket H.Screw
4	F9147CV	5	5-40 × 5/32 Pan H.Screw
5	U0122BB	1	Spring Assembly
6	U0102TF	1	Scale (MIN-MAX)
8	N0138BS	2	Plate

**Zero Suppression Kit
(Suffix Code : R)**

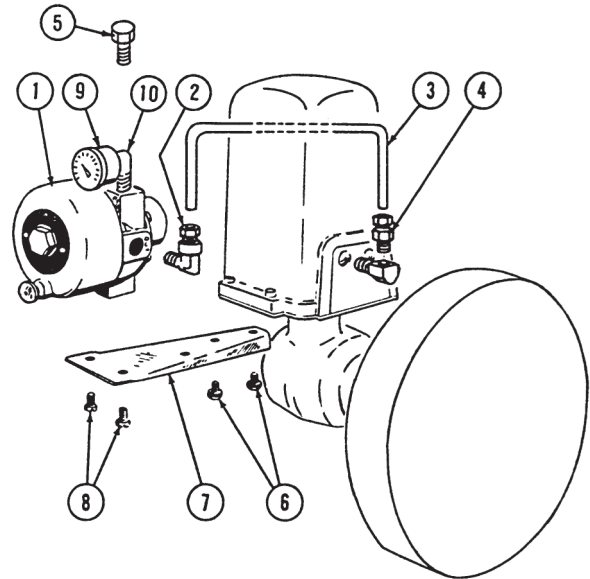


F0708.ai

Item	Part No.	Qty	Description
-	U0122BA	1	Zero Suppression Kit
1	U0102TF	1	Scale (MIN-MAX)
3	U0122BB	1	Spring Assembly
4	F9147CV	5	5-40 × 3/16 Socket H.Screw
5	A0100YC	2	6-32 × 1/4 Socket H.Screw
6	U0102RW	1	Bracket
7	N0138BS	2	Plate

Integral Air Filter Set

Item	Part No.	Qty	Description
1	F9140DA-B	1	Filter Regulator (JIS connection)
	F9140DB-B	1	Filter Regulator (ANSI connection)
2	0050392	1	Elbow Assembly (JIS connection) (prior to Aug.1987)
	0050332	1	Elbow Assembly (ANSI connection) (prior to Aug.1987)
	G9611CD	1	Elbow Assembly (JIS connection) (since Aug.1987)
	G9611CN	1	Elbow Assembly (ANSI connection) (since Aug.1987)
3	0051237	1	Tube (prior to Aug.1987)
	F9101FM	1	Tube (since Aug.1987)
4	0050386	1	Connector Assembly (JIS connection) (prior to Aug.1987)
	0050325	1	Connector Assembly (ANSI connection) (prior to Aug.1987)
	G9611AD	1	Connector Assembly (JIS connection) (since Aug.1987)
	G9611AW	1	Connector Assembly (ANSI connection) (since Aug.1987)
5	F9145BF	1	Plug (JIS connection)
	D0114PN	1	Plug (ANSI connection)
6	0041292	2	1/4-20×3/8 R.H.Screw
7	U0123AF	1	Bracket
8	0040190	2	1/4-20 × 3/8 F.H.Screw
9	See Table 6	2	Pressure Gauge
10	Below	1	Elbow
	G9612DB		For JIS connection
	G9612DD		For ANSI connection
	F9140FH		For JIS connection
	F9140FJ		For ANSI connection

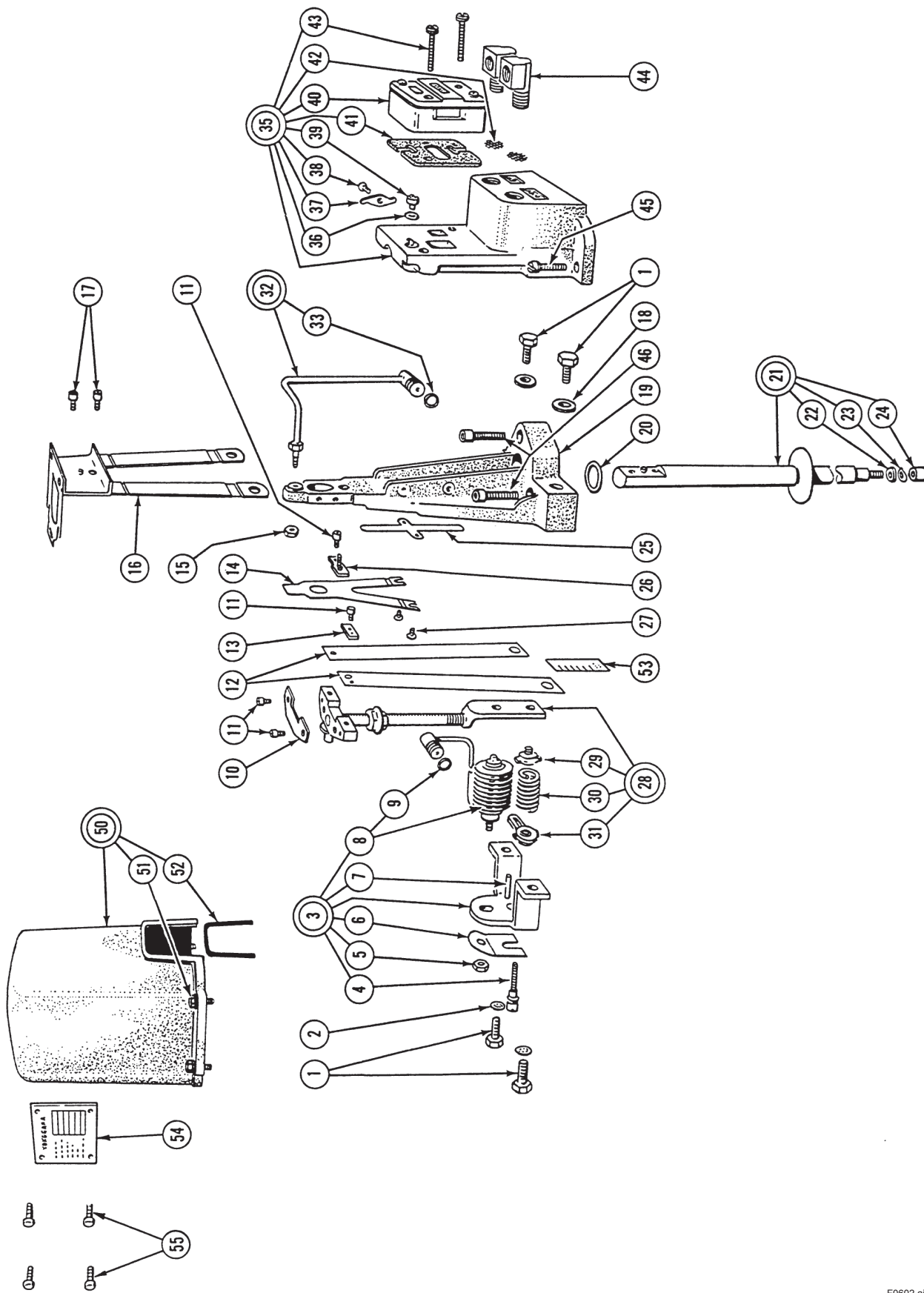


F0709.ai

Table 6. Pressure Gauge

Suffix Code	Prior to Apr.1998	Since Apr.1998
/G(N)AS-FM	G9615AA	G9615AT
/G(N)AS-FE	G9615AE	G9615EK
/G(N)AS-FP(0 to 200 kPa)	G9615AH	G9615EA
/G(N)AS-FB(0 to 2 bar)	G9615AM	G9615EC

Note) In order for gauge shipped before April, 1998 to be replaced, please use gauge and elbow, which part numbers are effective April, 1998.



F0602.ai

Force Balance Unit (items 1 through 33)**Other Parts (items 35 through 55)**

Part No.N0999SL: with Stainless Steel Force Bar (standard)

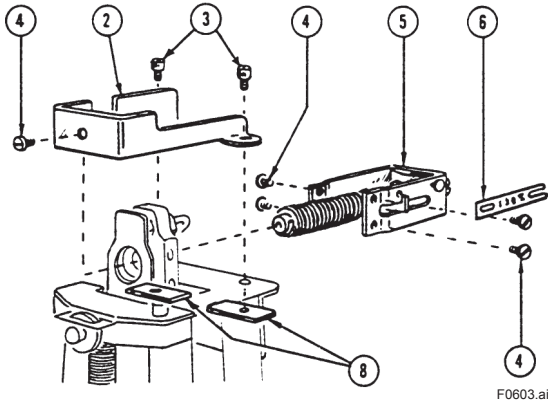
Part No.N0999SG: Low Spans

(for Model Y/15FA- /LD)

Item	Part No.	Qty	Description	Item	Part No.	Qty	Description
1	U0102LN	4	1/4-28 × 1/2 Hex H.Screw	35	D0124JD	1	Relay Mounting Assembly (ANSI connection)
2	0048219	2	Lockwasher		F9101DF	1	Relay Mounting Assembly (JIS connection)
3	U0119TA	1	Bracket Assembly (N0999SL)				
	U0119TF	1	Bracket Assembly (N0999SG)	36	A037744	1	*O-Ring
4	U0102FY	1	Screw				
5	0017611	1	Nut	37	U0102MF	1	Clamp
6	U0102FZ	1	Spring	38	X0100AA	1	6-32 × 7/32 Fil.H.Screw
7	U0102NA	1	Pin	39	D0124JG	1	*Restrictor
8	U0119TC	1	Bellows Assembly (N0999SL)	40	F9138YA	1	*Pneumatic Amplifier,80A
9	D0123MZ	1	*O-Ring	41	C0100EM	1	*Gasket
8	U0119TG	1	Bellows Assembly (N0999SG)	42	U0103FP	2	*Screen
9	D0123MZ	1	*O-Ring	43	X0116CS	2	10-32 × 1 Pan H.Screw
10	U0102KP	1	Plate	44	0050506	2	Elbow (ANSI connection)
11	X0100MK	4	6-32 × 3/16 Socket H.Cap Screw		0050509	2	Elbow (JIS connection)
12	U0102KL	2	Flexure	45	0006535	2	10-32 × 3/4 Fil.H.Screw
13	U0102LP	1	Plate	46	X0100YC	3	1/4-28 × 7/8 Cap Screw
14	N0999MH	1	Flapper	50	U0102MM	1	Cover Assembly
15	X0104EB	1	Nut	51	X0100RP	4	10-32 × 9/16 Hex H.Screw
16	N0999FM	1	Flexure Assembly	52	U0102MS	1	Gasket
17	X0100ML	2	8-32 × 1/4 Socket H.Cap Screw	53	Below	1	Scale
18	X0166MX	2	Washer		F9103AD		Standard (kPa)
19	N0999ML	1	Base		D0117TX		(psi)
20	N0143XN	1	O-Ring		D0117TX-J		(kgf/cm ²)
21	N0143MK	1	Force Bar Assembly (SUS 316 s.s.)	54	—	1	Data Plate
22	N0143SB	1	Washer (SUS 316 s.s.)	55	0046879	4	Self-tapping Screw
23	U0102MX	1	Dished Washer (inconal)	—	N0138GA	1	Dashpot Assembly (not shown) (for /OSFC)
24	U0102LE	1	Nut (SUS 316 s.s.)				
25	N0142NY	1	Spacer				
26	U0102TE	1	Bracket Assembly				
27	0023442	2	3-48 × 3/16 Fil.H.Screw				
28	N0999MP	1	Range Bar Assembly (N0999SG)				
	N0999QA	1	Range Bar Assembly (N0999SL)				
29	U0102KR	1	Spring Holder				
30	N0999MG	1	Spring (N0999QA)				
	N0999MC	1	Spring (N0999MP)				
31	U0102KC	1	Spring Holder				
32	U0119TB	1	*Nozzle Assembly				
33	D0123MZ	1	*O-Ring				

* Denotes parts more frequently replaced.

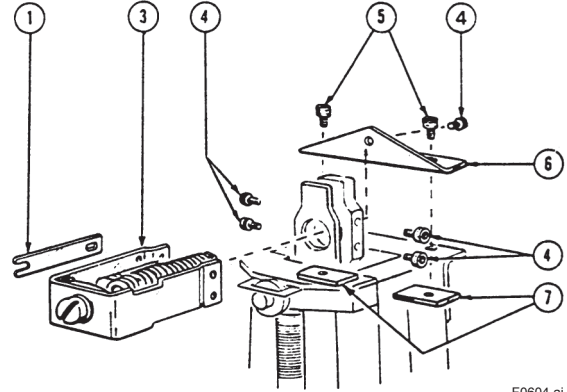
**Zero Elevation Kit
(Suffix Code : L)**



F0603.ai

Item	Part No.	Qty	Description
-	U0122BS	1	Zero Elevation Kit
2	U0122BT	1	Bracket
3	A0100YC	2	6-32 × 1/4 Socket H.Screw
4	F9147CV	5	5-40 × 5/32 Pan H.Screw
5	U0122BB	1	Spring Assembly
6	U0102TF	1	Scale (MIN-MAX)
8	N0138BS	2	Plate

**Zero Suppression Kit
(Suffix Code : R)**

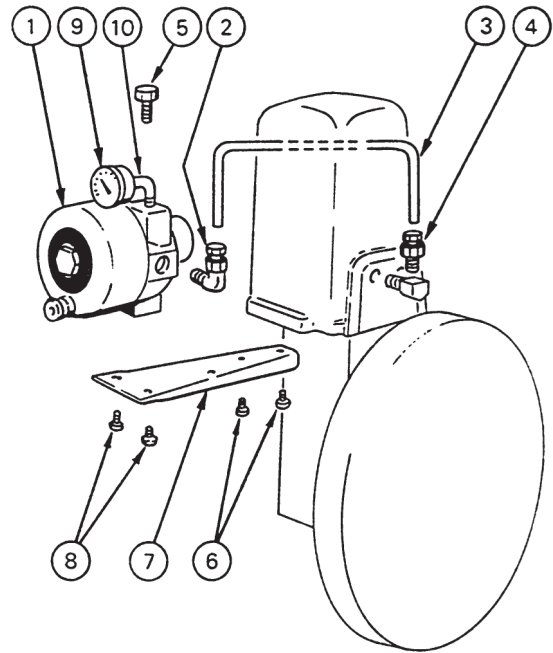


F0604.ai

Item	Part No.	Qty	Description
-	U0122BA	1	Zero Suppression Kit
1	U0102TF	1	Scale (MIN-MAX)
3	U0122BB	1	Spring Assembly
4	F9147CV	5	5-40 × 3/16 Socket H.Screw
5	A0100YC	2	6-32 × 1/4 Socket H.Screw
6	U0102RW	1	Bracket
7	N0138BS	2	Plate

Integral Air Filter Set

Item	Part No.	Qty	Description
1	F9140DA-B	1	Filter Regulator (JIS connection)
	F9140DB-B	1	Filter Regulator (ANSI connection)
2	0050392	1	Elbow Assembly (JIS connection) (prior to Aug.1987)
	0050332	1	Elbow Assembly (ANSI connection) (prior to Aug.1987)
	G9611CD	1	Elbow Assembly (JIS connection) (since Aug.1987)
	G9611CN	1	Elbow Assembly (ANSI connection) (since Aug.1987)
3	0051237	1	Tube (prior to Aug.1987)
	F9101FM	1	Tube (since Aug.1987)
4	0050386	1	Connector Assembly (JIS connection) (prior to Aug.1987)
	0050325	1	Connector Assembly (ANSI connection) (prior to Aug.1987)
	G9611AD	1	Connector Assembly (JIS connection) (since Aug.1987)
	G9611AW	1	Connector Assembly (ANSI connection) (since Aug.1987)
5	F9145BF	1	Plug (JIS connection)
	D0114PN	1	Plug (ANSI connection)
6	0041292	2	1/4-28×3/8 R.H.Screw
7	U0123AF	1	Bracket
8	0040190	2	1/4-20 × 3/8 F.H.Screw
9	See Table 2	1	Pressure Gauge
10	Below	1	Elbow
	G9612DB		For JIS connection
	G9612DD		For ANSI connection
	F9140FH		For JIS connection
	F9140FJ		For ANSI connection



F0605.ai

Table 2. Pressure Gauge

Suffix Code	Prior to Apr.1998	Since Apr.1998
/G(N)AS-FM	G9615AA	G9615AT
/G(N)AS-FE	G9615AE	G9615EK
/G(N)AS-FP(0 to 200 kPa)	G9615AH	G9615EA
/G(N)AS-FB(0 to 2 bar)	G9615AM	G9615EC

(Note) In order for gauge shipped before April, 1998 to be replaced, please use gauge and elbow, which part numbers are effective April, 1998.