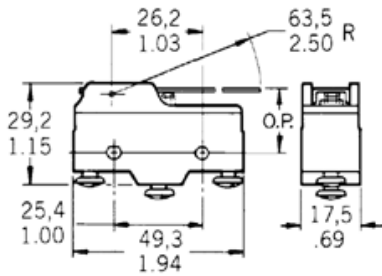
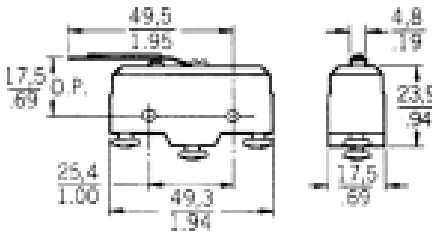


Straight lever



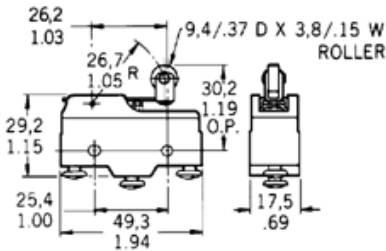
ELECTRICAL RATING	LEVER RADIUS	REFERENCE
	No return spring 152,4 mm	BZ-2RW80-A2 BZ-2RW84-A2 BZ-2RW863-A2

Straight flexible leaf lever



REFERENCE
BZ-2RL-A2

Roller lever



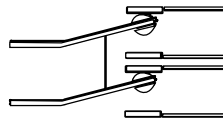
ELECTRICAL RATING	TERMINATION	LEVER RADIUS	REFERENCE
20 A	Solder	One way, 32,1 mm	BZ-2RW822-A2 BZ-2RW822
		48,3 mm	BZ-2RW826-A2 BZ-2RW82-A2
		48,3 mm	BA-2RV2-A2
		Reverse acting, 40,9 mm	BZ-2RM2-A2

DT Series Basic Switch

DT Series Standard Basic Switches consist of two independent single-pole double throw circuits in one housing actuated by one actuator. The terminals are separated by a non-conductive shield to reduce shorting.

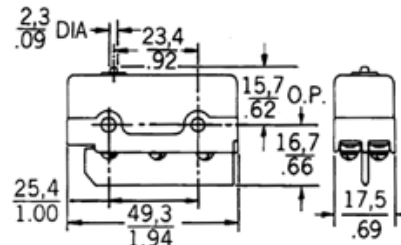
Voltage: 250 Vac
Electrical rating: 10 A
Operating temperature: -55 °C to 85 °C
 -67 ° F to 185 °F
Termination: Screw
Contact type: Silver
Approvals: CSA, UL
Switching options: DPDT

Double Pole, Double Throw



OPTIONS

Top pin plunger



REFERENCE
DT-2R-A7

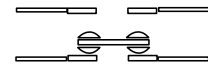
Overtravel plunger

Operating position 28, 2 mm (1.11 in)
 REFERENCE
DT-2RS1-A7

TB Series Miniature Double-break Basic Switch

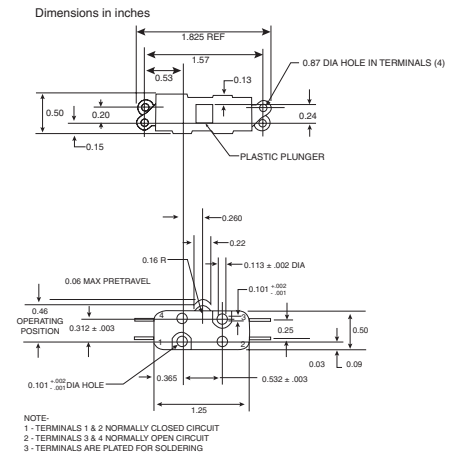
TB Series Miniature Double-break Basic Switches are basic double-break units that offer a means of controlling isolated circuits. Each circuit may be driven by an independent voltage source.

Voltage: 250 Vac
Electrical rating: 10 A
Operating temperature: -55 °C to 125 °C
 -67 ° F to 257 °F
Termination: Solder
Contact type: Silver
Approvals: CSA, UL
Switching options: (2 CKT DB)
 Double Pole, Double Throw, Double Break



OPTIONS

Top pin plunger



REFERENCE
1TB1-2

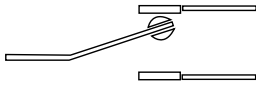
Basic Switch Accessories

A range of accessories is available for BA, BZ and DT switches, such as the 5PA2 terminal enclosure. For more information please contact your local sales office.

SM and SX Series Subminiature Basic Switches

SM and SX Series Subminiature Basic Switches are used for simple or precision on/off application needs. These switches combine small size and light weight with ample electrical capacity, precision operation and long life. The SX Series are small, precision, snap-action switches that are ideal where savings in space and weight are important.

Voltage: 250 Vac
Operating temperature: -55 °C to 125 °C
 -67 ° F to 257 °F
Termination: Solder
Contact type: Silver
Switching options: SPDT
 Single Pole, Double Throw

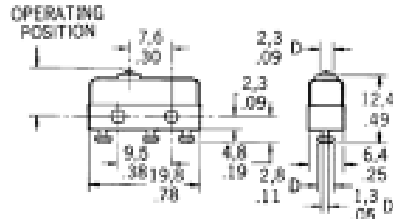


SM Series

Approvals: CE, CSA, UL
Ampere rating: 5 A

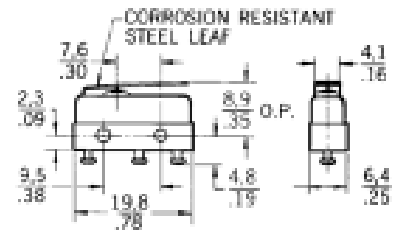
OPTIONS

Top pin plunger



TERMINATION	REFERENCE
Quick connect	11SM1 11SM601-H4

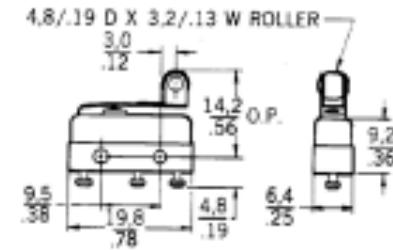
Straight lever



REFERENCE
11SM1

Lever length 4.83 mm

Roller lever



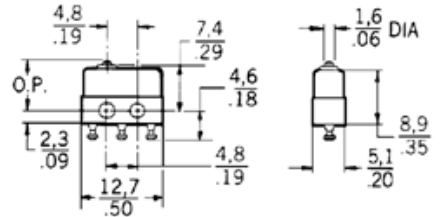
REFERENCE
11SM2-T

SX Series

Approvals: CE, CSA, UL
Ampere rating: 5 A

OPTIONS

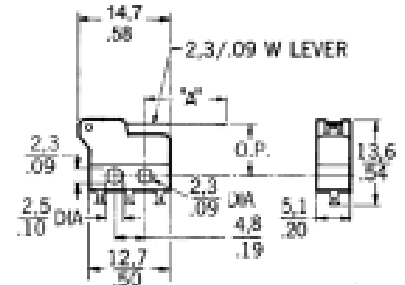
Top pin plunger



Approvals: 6SX7-T UL, CSA

CONTACTS	AMPERE RATING	REFERENCE
Silver	7 A	1SX1-T
Silver	3 A	11SX1-T
Gold	1 A	6SX7-T

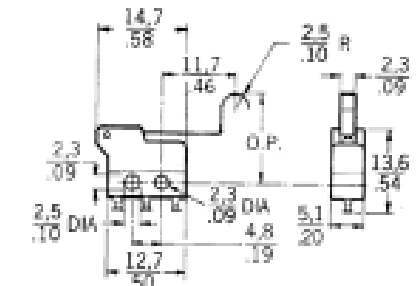
Straight lever



REFERENCE
311SX2-T
311SX3-T

Lever length 'A' 12.8 mm
 Lever length 'A' 24.5 mm

Simulated roller



REFERENCE
311SX5-T

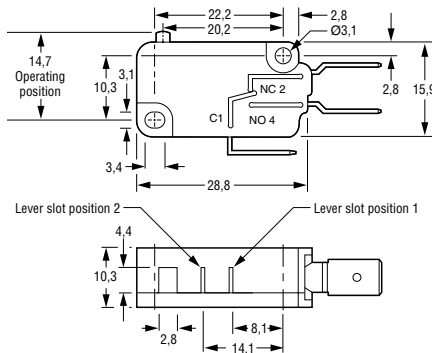
V3 and V5 Switches

V3 and V5 Series Basic Switches are used for simple or precision on/off, end of limit, presence/absence, pressure, temperature and manual operator interface application needs. V3 switches are similar to V5s except for a mounting hole diameter of 2,9 mm (0.114 in).

Voltage:	250 Vac
Operating temperature:	
Standard	-55 °C to 85 °C -67 °F to 185 °F
High temperature	-55 °C to 150 °C -67 °F to 302 °F
Termination:	6,3 mm x 0,8 mm Quick connect (QC)
Contact type:	Silver/silver cadmium oxide
Electrical rating:	
	V3 15 A
	V5A 20 A
	V5B/P/R 16 A
	V5C/D 10 A
	V5S 22 A
Switching options:	SPDT
	Single Pole Double Throw

OPTIONS

Top pin plunger

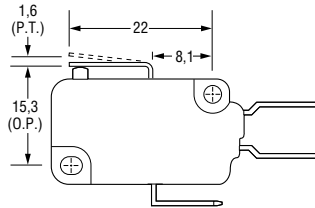


APPROVALS	REFERENCE
CE, ENEC	V5A010CB
CE, CSA, ENEC, UL	V5B010CB3
CE, CSA, UL	V5B010FB3
CE, ENEC	V5B010TB
CE, ENEC	V5B210CB
CE, ENEC	V5C010BB
CE, CSA, ENEC, UL	V5C010EB3
CE, CSA, ENEC, UL	V5C010TB3
CE, ENEC	V5P010CB

APPROVALS	REFERENCE
CE, ENEC	V5D030BB
CE, ENEC	V5R030CB
CE, BEAB	V5S020CB
CE, BEAB	V5S030CB

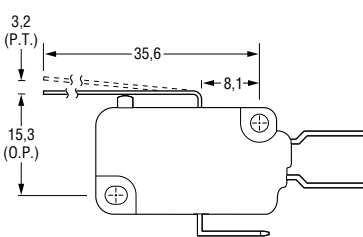
APPROVALS	SWITCHING OPTIONS	REFERENCE
CE, ENEC	SPNO	V5D030BB
CE, ENEC	SPNO	V5R030CB
CE, BEAB	SPNC	V5S020CB
CE, BEAB	SPNO	V5S030CB

Straight lever Type B



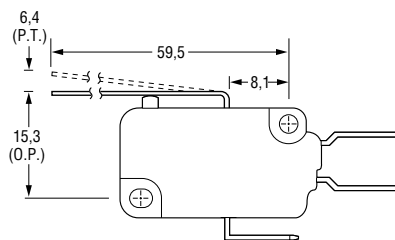
APPROVALS	REFERENCE
CE, CSA, ENEC, UL	V5C010BB3B

Type C



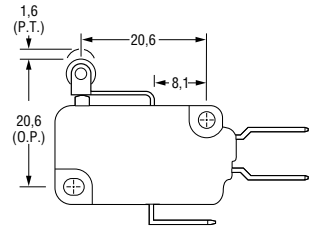
APPROVALS	REFERENCE
CE, ENEC	V5B210CB1C

Type G



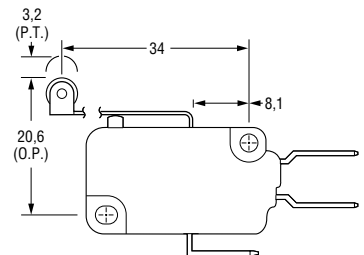
APPROVALS	REFERENCE
CE, ENEC	V5C010BB1G

Roller lever Type D



APPROVALS	REFERENCE
CE, CSA, ENEC, UL	V5B210CB3D
CE, CSA, ENEC, UL	V5C010BB3D

Type E



APPROVALS	REFERENCE
CE, CSA, ENEC, UL	V5A010CB4E
CE, ENEC	V5B210CB1E