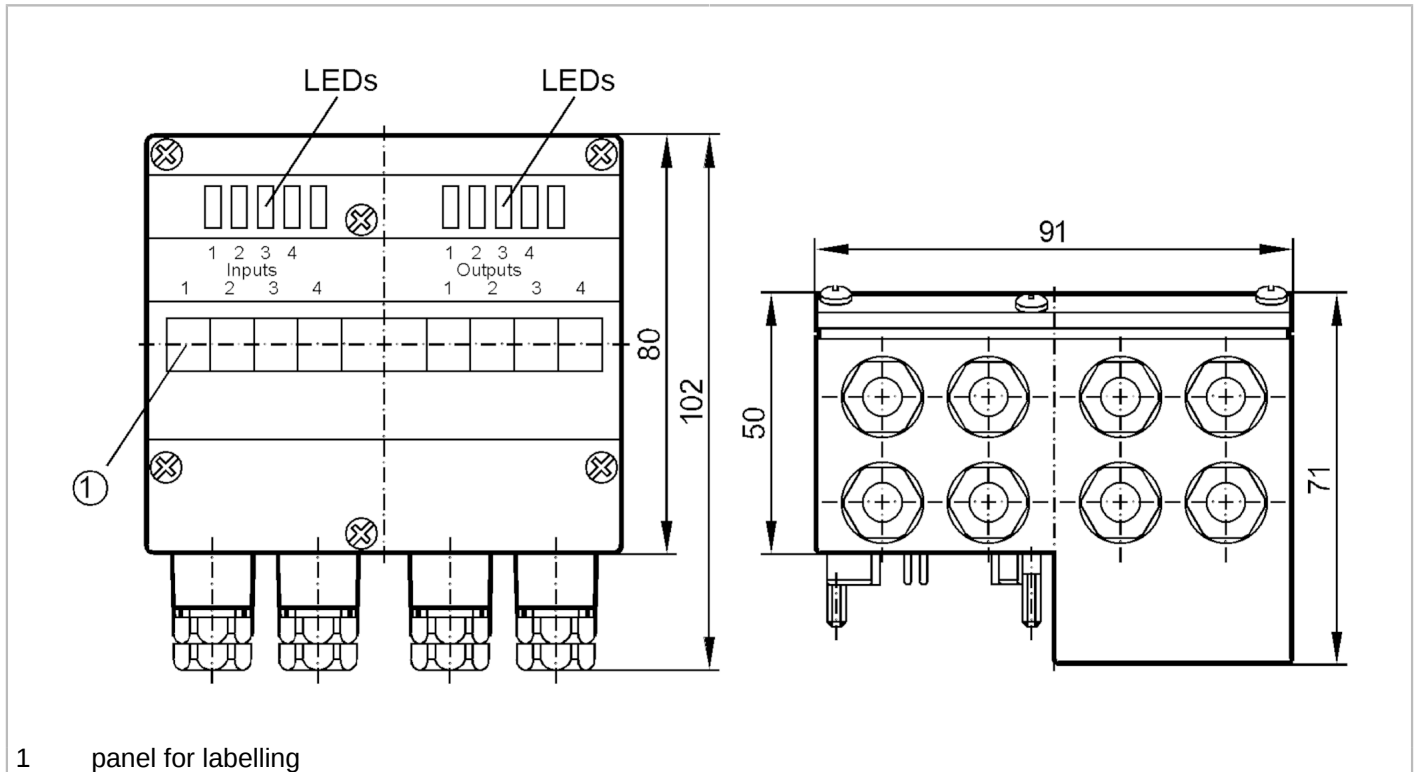


AC2035



AS-Interface universal module

EEMS/Module/4DI/4DO/T/CCT



1 panel for labelling



Application

Application

field installation

Electrical data

Operating voltage	[V]	26.5...31.6 DC
Max. current consumption from AS-i	[mA]	230
Max. current load total	[A]	4
Integrated watchdog		yes

Inputs / outputs

Number of inputs and outputs Number of digital inputs: 4; Number of digital outputs: 4

Inputs

Number of digital inputs		4
Input circuit of digital inputs		PNP
Sensor supply of the inputs		AS-i
Voltage supply	[V]	20...30
Max. total current rating of inputs	[mA]	200
Input current High	[mA]	> 5
Input current low	[mA]	< 3
Min. switching level high signal	[V]	10
Digital inputs protected against short circuits		yes

AC2035



AS-Interface universal module

EEMS/Module/4DI/4DO/T/CCT

Outputs																															
Number of digital outputs	4																														
Circuit	PNP																														
Voltage range DC [V]	24; (to PELV)																														
Max. current load per output [mA]	1000; (DC-12 / DC-13)																														
Short-circuit proof	yes																														
Electrically separated	yes																														
Actuator supply outputs	AUX																														
Operating conditions																															
Ambient temperature [°C]	-25...60																														
Protection	IP 65																														
Tests / approvals																															
EMC	EN 50295																														
AS-i classification																															
AS-i profile	S-7.F.F																														
AS-i I/O configuration [hex]	7																														
AS-i ID code [hex]	F.F																														
AS-i certificate pending	yes																														
Data bits	<table border="1"> <thead> <tr> <th>Data bit</th> <th>D0</th> <th>D1</th> <th>D2</th> <th>D3</th> </tr> </thead> <tbody> <tr> <td>bidirectional</td> <td>I-1 / O-1</td> <td>I-2 / O-2</td> <td>I-3 / O-3</td> <td>I-4 / O-4</td> </tr> </tbody> </table>	Data bit	D0	D1	D2	D3	bidirectional	I-1 / O-1	I-2 / O-2	I-3 / O-3	I-4 / O-4																				
Data bit	D0	D1	D2	D3																											
bidirectional	I-1 / O-1	I-2 / O-2	I-3 / O-3	I-4 / O-4																											
Parameter bits	<table border="1"> <thead> <tr> <th>Parameter bit</th> <th>Function</th> <th></th> <th></th> <th></th> <th></th> </tr> </thead> <tbody> <tr> <td>P0</td> <td>watchdog for all outputs</td> <td>:</td> <td>activated</td> <td>* /</td> <td>disabled</td> </tr> <tr> <td>P1</td> <td>not used</td> <td></td> <td></td> <td></td> <td></td> </tr> <tr> <td>P2</td> <td>not used</td> <td></td> <td></td> <td></td> <td></td> </tr> <tr> <td>P3</td> <td>not used</td> <td></td> <td></td> <td></td> <td></td> </tr> </tbody> </table>	Parameter bit	Function					P0	watchdog for all outputs	:	activated	* /	disabled	P1	not used					P2	not used					P3	not used				
Parameter bit	Function																														
P0	watchdog for all outputs	:	activated	* /	disabled																										
P1	not used																														
P2	not used																														
P3	not used																														
Mechanical data																															
Weight [g]	317																														
Type of mounting	AS-i interface to FC-E or SC lower parts																														
Material	PA 6-GF30; stainless steel (1.4305 / 303)																														
Displays / operating elements																															
Display	<table border="1"> <thead> <tr> <th>Power</th> <th>LED, green</th> </tr> </thead> <tbody> <tr> <td>Function</td> <td>LED, yellow</td> </tr> </tbody> </table>	Power	LED, green	Function	LED, yellow																										
Power	LED, green																														
Function	LED, yellow																														
Remarks																															
Remarks	Inputs and outputs must be electrically isolated.																														
Pack quantity	1 pcs.																														
Electrical connection																															
cage clamps:																															
contact pins to module lower part, FK-E / PG:																															