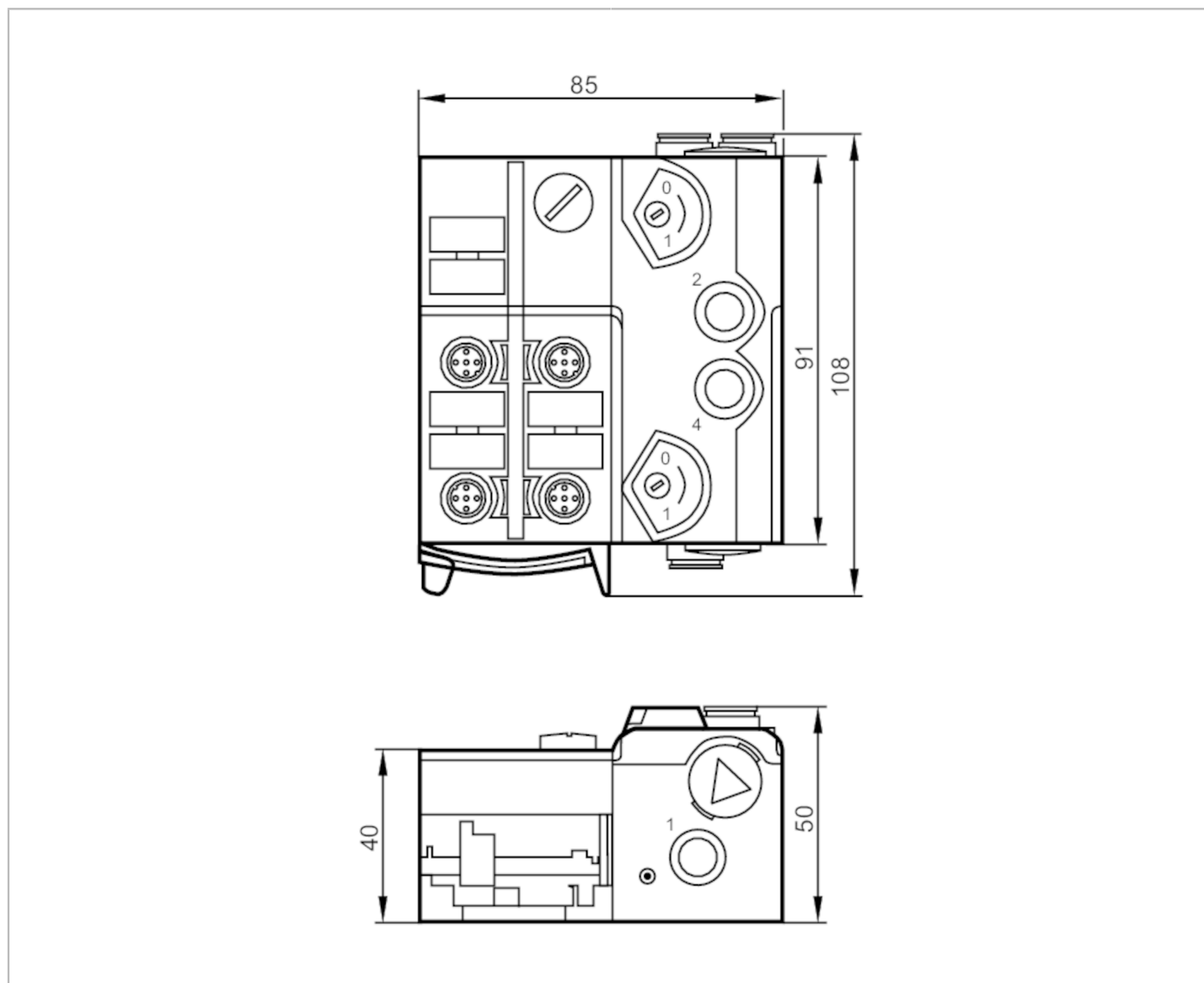


# AC5227



## AS-Interface Airbox with quick mounting technology

AirBox 2x3/2 2DI IP67



| Application                             |   |
|---|---|
| Application                             | field installation  |
| Medium temperature [°C]                 | -10...50  |
| Electrical data                         |   |
| Operating voltage [V]                   | 26.5...31.6 DC  |
| Max. current consumption from AS-i [mA] | 180   |
| Integrated watchdog                     | yes   |
| Inputs / outputs                        |   |
| Number of inputs and outputs            | Number of digital inputs: 2; Number of pneumatic outputs: 2 |



## AS-Interface Airbox with quick mounting technology

AirBox 2x3/2 2DI IP67

| Inputs  |                  |               |     |                           |    |
|---|------------------|---------------|-----|---------------------------|----|
| Number of digital inputs                        |                  |               |     | 2                         |    |
| Input circuit of digital inputs                 |                  |               |     | PNP                       |    |
| Sensor supply of the inputs                     |                  |               |     | AS-i                      |    |
| Voltage supply                                  | [V]              |               |     | 20...30; (via flat cable) |    |
| Max. total current rating of inputs             | [mA]             |               |     | 100                       |    |
| Input current High                              | [mA]             |               |     | 6...10                    |    |
| Input current Low                               | [mA]             |               |     | 0...2                     |    |
| Min. switching level high signal                | [V]              |               |     | 11                        |    |
| Digital inputs protected against short circuits |                  |               |     | yes                       |    |
| Outputs   |                  |               |     |                           |    |
| Number of pneumatic outputs                     |                  |               |     | 2                         |    |
| Actuator supply outputs                         |                  |               |     | AS-i                      |    |
| Operating conditions                            |                  |               |     |                           |    |
| Ambient temperature                             | [°C]             |               |     | -10...55                  |    |
| Protection                                      |                  |               |     | IP 67                     |    |
| Tests / approvals                               |                  |               |     |                           |    |
| EMC   |                  | EN 50295      |     |                           |    |
|   |                  | IEC 61000-6-2 |     |                           |    |
| MTTF  | [years]          |               |     | 321                       |    |
| AS-i classification                             |                  |               |     |                           |    |
| AS-i version                                    |                  |               |     | 2.11; 3.0                 |    |
| AS-i addressing                                 |                  |               |     | addressing socket         |    |
| Extended addressing mode                        |                  |               |     | no                        |    |
| AS-i profile                                    |                  |               |     | S-3.F.F                   |    |
| AS-i I/O configuration                          | [hex]            |               |     | 3                         |    |
| AS-i ID code                                    | [hex]            |               |     | F.F                       |    |
| AS-i certificate pending                        |                  |               |     | yes                       |    |
| Assignment of the data bits                     | data bit         | D0            | D1  | D2                        | D3 |
|   | input            | 1             | 2   | 3                         | 4  |
|   | socket           | I-1           | I-2 | -                         | -  |
|   | pin              | 2+4           | 2+4 | -                         | -  |
|   | pneumatic output | -             | -   | 2                         | 4  |

# AC5227



## AS-Interface Airbox with quick mounting technology

AirBox 2x3/2 2DI IP67

| Mechanical data                |  |
|--------------------------------|--|
| Weight [g]                     | 378.5  |
| Type of mounting               | quick mounting   |
| Materials                      | PA; POM; piercing contacts: CuSn6 nickel-plated and tin-plated                   |
| Pneumatic system               | 2 x 3/2-way slide valves (free from overlapping)                                 |
| Operating pressure range [bar] | 2...8  |
| Operating pressure range [MPa] | 0.2...0.8  |
| Operating pressure range [psi] | 29...116   |
| Air flow at 6/5 bar [l/min]    | 500  |
| Permissible compressed air     | non-lubricated compressed air class 6-3-1; lubricated compressed air class 6-3-4 |
| Manual override                | pressing/releasing or pressing/turning/locking                                   |
| Tube fittings                  | 8 mm   |
| Exhaust                        | exhaust can be discharged through tube connection                                |

| Displays / operating elements |           |             |
|-------------------------------|-----------|-------------|
| Display                       | operation | LED, green  |
|                               | errors    | LED, red    |
|                               | function  | LED, yellow |

| Electrical connection |            |
|-----------------------|------------|
| AS-i bus connection   | Flachkabel |

| Accessories            |                             |
|------------------------|-----------------------------|
| Items supplied         | lower part                  |
| Accessories (optional) | Mounting plate:, E74999     |
|                        | Module lower part:, E75000  |
|                        | Protective cap: M12, E73004 |
|                        | sealing plugs:, E75231      |
|                        | silencer:, E75232           |
|                        | Push-in L-fitting:, E75228  |
|                        | Push-in T-fitting:, E75227  |

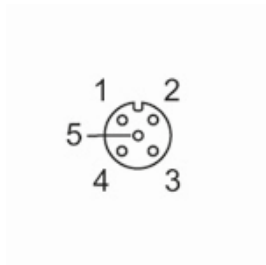
| Remarks       |  |
|---------------|--|
| Remarks       | If not pneumatically operated, E75231 sealing plug must be inserted.                     |
|               | Avoid ingress of dirt and dust.  |
|               | Do not connect any of the following points to an external potential:<br>L-, L+, I-1, I-2 |
|               | The connections are electrically connected with the AS-i cable.                          |
|               | Please see the notes on compressed air and EMC/ESD under "Downloads"                     |
| Pack quantity | 1 pcs.   |

| Electrical connection  |  |
|--|--|
| quick mounting technology for AS-i flat cable: ; three orientations possible |  |
| Connector: M12   |  |



## AS-Interface Airbox with quick mounting technology

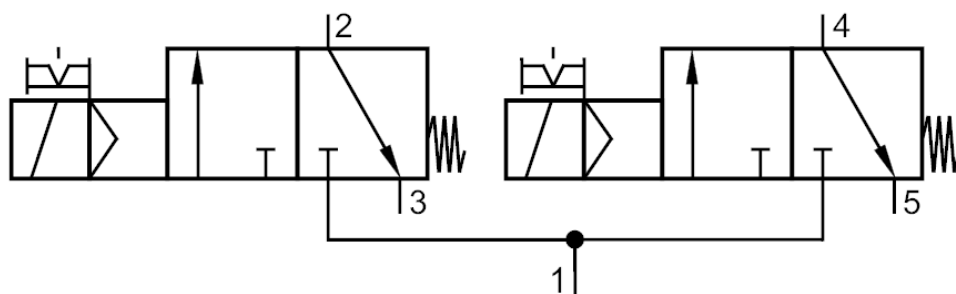
AirBox 2x3/2 2DI IP67



|   | Inputs            |
|---|-------------------|
| 1 | voltage supply L+ |
| 2 | not used          |
| 3 | Sensor supply L-  |
| 4 | data input        |
| 5 | not used          |

### Diagrams and graphs

Pneumatic symbol



2 x 3/2-way slide valves (free from overlapping)