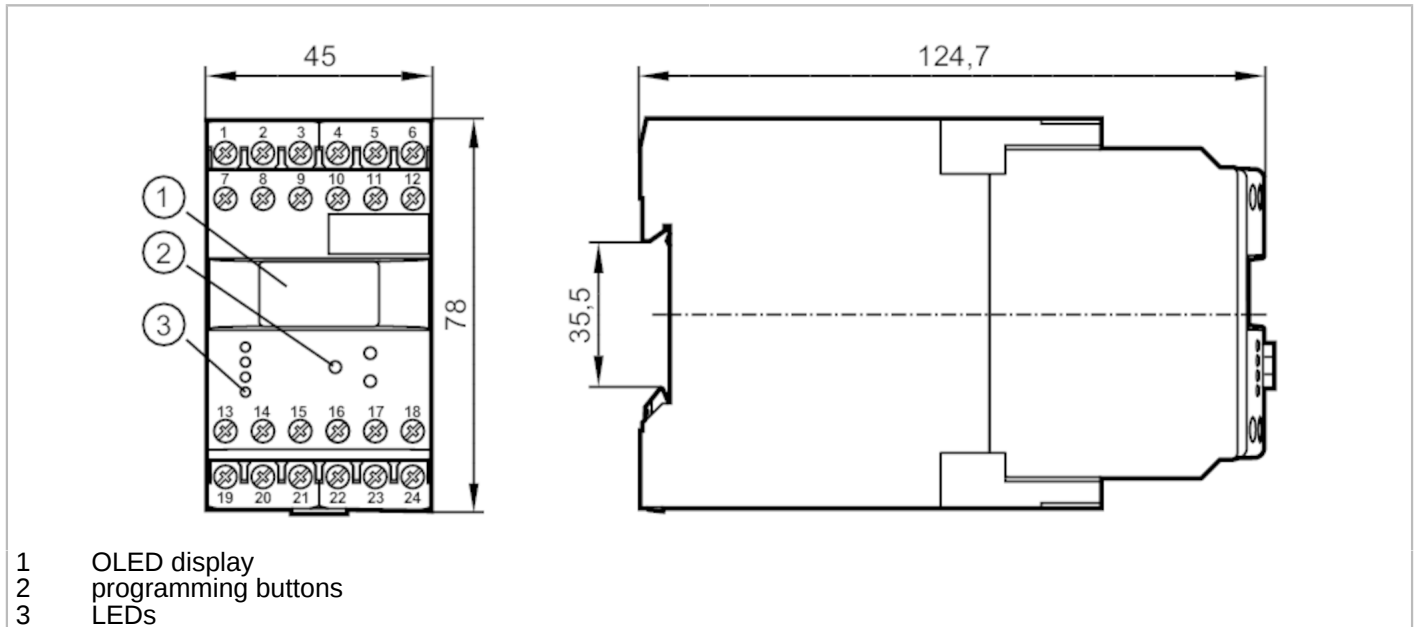


DD2503



Evaluation unit for speed monitoring

MONITOR/FR-1 /110-240VAC/DC



- 1 OLED display
- 2 programming buttons
- 3 LEDs



| Product characteristics | |
|-------------------------------------|---|
| Housing | housing for DIN rail mounting |
| Dimensions [mm] | 78 x 45 x 124.7 |
| Application | |
| Application | pulse evaluation system with microprocessor for frequency; rotational speed; speed; pulses and machine cycles |
| Electrical data | |
| Nominal voltage AC [V] | 110...240 |
| Nominal voltage DC [V] | 27 |
| Nominal voltage tolerance [%] | < 10 |
| Nominal voltage tolerance 2 [%] | 20...10 |
| Nominal frequency AC [Hz] | 50...60 |
| Power consumption [W] | 3 |
| Auxiliary energy for sensors DC [V] | 19.6...27.7; (SELV, ≤ 15 mA) |
| Inputs / outputs | |
| Number of inputs and outputs | Number of analogue outputs: 1; Number of relay outputs: 2 |
| Outputs | |
| Number of relay outputs | 2 |
| Contact rating | 6 A (250 V AC); B300, R300 |
| Number of analogue outputs | 1 |
| Analogue current output [mA] | 4...20 |
| Max. load [Ω] | 500 |
| Measuring/setting range | |
| Setting range Hz [Hz] | 0.1...1000 |
| Setting range [Imp/min] | 1...60000 |

DD2503



Evaluation unit for speed monitoring

MONITOR/FR-1 /110-240VAC/DC

| Operating conditions | | |
|-------------------------------|------------------|---|
| Ambient temperature | [°C] | -40...60 |
| Storage temperature | [°C] | -40...85 |
| Max. relative air humidity | [%] | 80; (40 °C: 50 %) |
| Protection | | IP 50 |
| Protection rating terminals | | IP 20 |
| Tests / approvals | | |
| EMC | EN 61010 | 2011 |
| | EMV 89/336/EWG | |
| | EN 61000-6-2 | 2005 |
| | EN 61000-6-4 | 2007 |
| MTTF | [years] | 152 |
| Mechanical data | | |
| Weight | [g] | 381.5 |
| Housing | | housing for DIN rail mounting |
| Dimensions | [mm] | 78 x 45 x 124.7 |
| Materials | | plastics |
| Displays / operating elements | | |
| Display | | OLED display, 128 x 64 pixels luminous |
| | switching status | LED, green |
| Remarks | | |
| Remarks | | The unit complies with overvoltage category II; degree of soiling 2 |



Evaluation unit for speed monitoring

MONITOR/FR-1 /110-240VAC/DC

Electrical connection

dual-chamber terminals: 2 x ...2.5 mm²; AWG 14

| | |
|----|--------------------------------|
| 1 | DC supply voltage (L-) |
| 2 | DC supply voltage (L+) |
| 3 | supply transistor outputs (L+) |
| 4 | sensor signal pnp |
| 5 | DC Sensor supply (L+) |
| 6 | DC Sensor supply (L-) |
| 7 | AC supply voltage (L) |
| 8 | AC supply voltage (N) |
| 9 | not used |
| 10 | sensor signal npn |
| 11 | not used |
| 12 | not used |
| 13 | relay 1 common |
| 14 | relay 1 normally open |
| 15 | relay 1 normally closed |
| 16 | transistor output 1 pnp |
| 17 | reset 1 pnp |
| 18 | reset 2 pnp |
| 19 | relay 2 common |
| 20 | relay 2 normally open |
| 21 | relay 2 normally closed |
| 22 | analogue output (+) |
| 23 | analogue output (-) |
| 24 | transistor output 2 pnp |