

DI506A



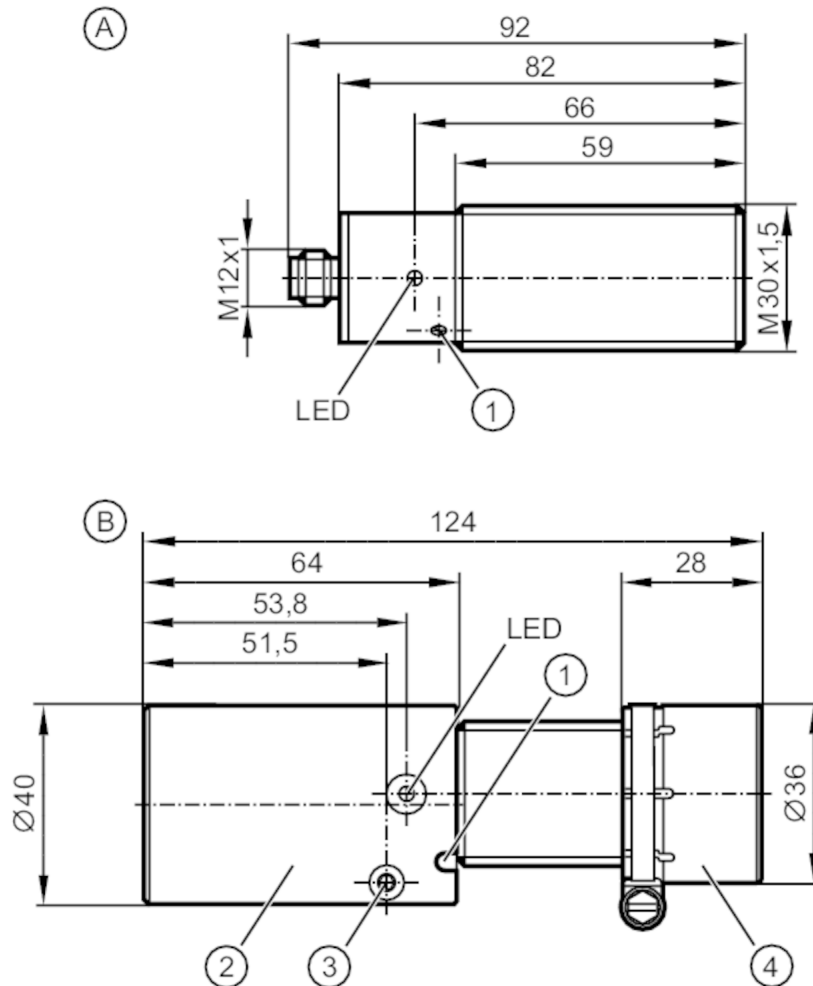
Compact evaluation unit for speed monitoring

DIA3010-ZPKG/US/3D/5S

discontinued article

Alternative articles: DI522A

When selecting an alternative article and accessories please note that technical data may differ!



- A sensor
- B sensor with impact protection housing
- 1 potentiometer
- 2 impact protection housing for the connector
- 3 clamping screw
- 4 impact protection housing for the sensor



Product characteristics

Electrical design	PNP
Output function	normally open
Sensing range [mm]	10; (without impact protection housing: flush mountable; with impact protection housing: non-flush mountable 7 mm)
Dimensions [mm]	M30 x 1.5 / L = 82

Application

Application	simple evaluation of rotating and linear movement with regard to underspeed; blocking
-------------	---

DI506A



Compact evaluation unit for speed monitoring

DIA3010-ZPKG/US/3D/5S

Electrical data		
Nominal voltage DC	[V]	10...36
Current consumption	[mA]	< 15
Protection class		III
Reverse polarity protection		yes
Outputs		
Total number of outputs		1
Electrical design		PNP
Output function		normally open
Max. voltage drop switching output DC	[V]	2.5
Permanent current rating of switching output DC	[mA]	250
Short-time current rating of switching output	[mA]	250
Switching frequency DC	[Hz]	100
Short-circuit proof		yes
Overload protection		yes
Detection zone		
Sensing range	[mm]	10; (without impact protection housing: flush mountable; with impact protection housing: non-flush mountable 7 mm)
Sensing range adjustable		no
Real sensing range Sr	[mm]	10 ± 10 %; (without impact protection housing flush mountable)
Operating distance	[mm]	0...5; (with impact protection housing non-flush mountable)
Measuring/setting range		
Setting range	[Imp/min]	5...300
Accuracy / deviations		
Correction factor		steel: 1 / stainless steel: 0.7 / brass: 0.5 / aluminium: 0.4 / copper: 0.3
Hysteresis	[% of Sr]	10
Response times		
Start-up delay	[s]	5; (typical)
Max. damping frequency	[Imp/min]	15000
Software / programming		
Adjustment of the switch point		multiturn potentiometer
Operating conditions		
Ambient temperature	[°C]	-20...50
Protection		IP 67
Tests / approvals		
ATEX marking		II 3D Ex tc IIIC T80°C Dc IP67 U
Note on ATEX marking		only in conjunction with the impact protection housing
EMC		EN 60947-5-2
MTTF	[years]	918

DI506A



Compact evaluation unit for speed monitoring

DIA3010-ZPKG/US/3D/5S

Mechanical data	
Weight [g]	302
Mounting	flush mountable
Dimensions [mm]	M30 x 1.5 / L = 82
Thread designation	M30 x 1.5
Materials	brass special coating; PBT; PPE; TPE-U; PA 6.6

Displays / operating elements		
Display	switching status	1 x LED, green
	input signal	1 x LED, yellow

Accessories	
Items supplied	lock nuts: 2
	Impact protection housing
	Mounting clamp

Electrical connection - plug

Connector: 1 x M12



Connection

