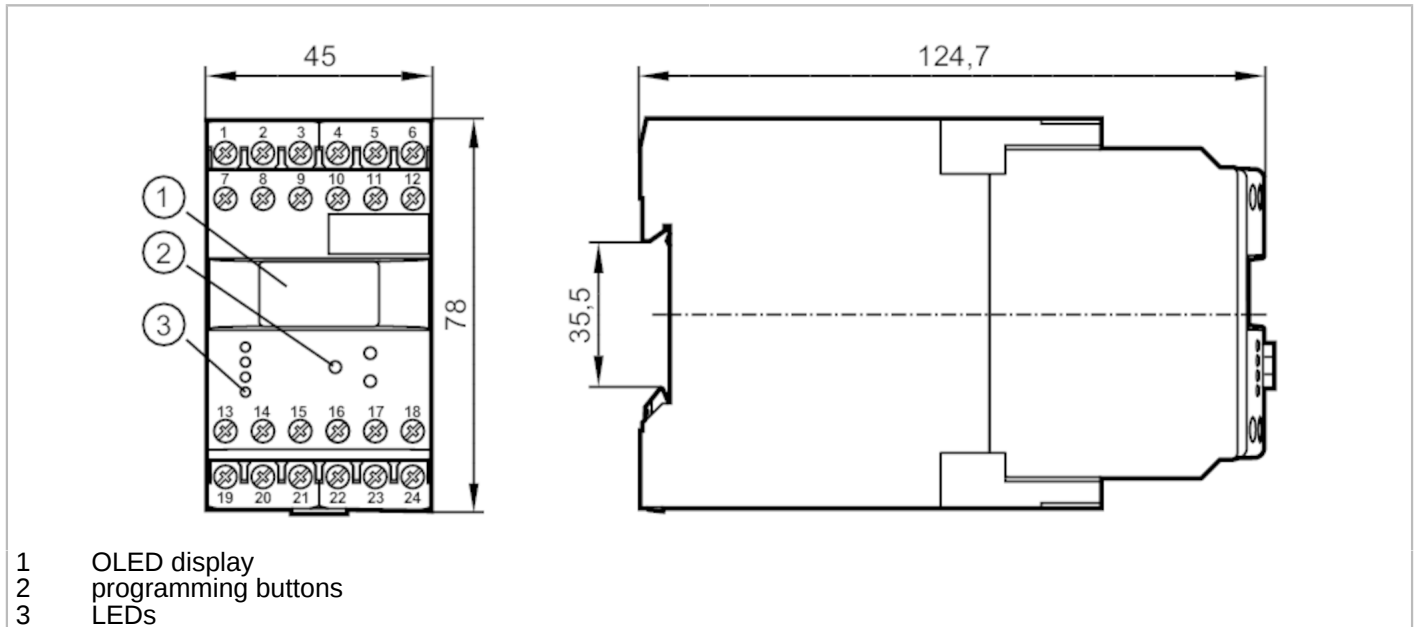


DW2503



Programmable frequency-to-current converter

MONITOR/FA-1 /100-240VAC/DC



Product characteristics

Housing	housing for DIN rail mounting
Dimensions [mm]	78 x 45 x 124.7

Application

Application	conversion of pulse sequences into analogue standard signals
-------------	--

Electrical data

Nominal voltage AC [V]	110...240
Nominal voltage DC [V]	27
Nominal voltage tolerance [%]	< 10
Nominal voltage tolerance 2 [%]	20...10
Nominal frequency AC [Hz]	50...60
Max. power consumption [VA]	8
Power consumption [W]	5
Auxiliary energy for sensors DC [V]	19.6...27.7; (SELV, ≤ 150 mA)

Inputs / outputs

Number of inputs and outputs	Number of analogue outputs: 1; Number of relay outputs: 1
------------------------------	---

Outputs

Number of relay outputs	1
Contact rating	6 A (250 V AC); B300, R300
Number of analogue outputs	1
Analogue current output [mA]	4...20
Max. load [Ω]	500
Analogue voltage output [V]	0...10
Min. load resistance [Ω]	10000

DW2503



Programmable frequency-to-current converter

MONITOR/FA-1 /100-240VAC/DC

Measuring/setting range		
Setting range Hz	[Hz]	0...10000
Setting range	[Imp/min]	0...600000
Operating conditions		
Ambient temperature	[°C]	-40...60
Storage temperature	[°C]	-40...85
Max. relative air humidity	[%]	80; (40 °C: 50 %)
Protection		IP 50
Protection rating terminals		IP 20
Tests / approvals		
EMC	EN 61010	2011
	EMV 89/336/EWG	
	EN 61000-6-2	2005
	EN 61000-6-4	2007
Mechanical data		
Weight	[g]	380.5
Housing		housing for DIN rail mounting
Dimensions	[mm]	78 x 45 x 124.7
Materials		plastics
Displays / operating elements		
Display		OLED display, 128 x 64 pixels luminous
	switching status	LED, green
Remarks		
Remarks		The unit complies with overvoltage category II; degree of soiling 2



Programmable frequency-to-current converter

MONITOR/FA-1 /100-240VAC/DC

Electrical connection

dual-chamber terminals: 2 x ...2.5 mm²; AWG 14

1	24 V DC supply voltage (L-)
2	24 V DC supply voltage (L+)
3	supply transistor outputs (L+)
4	sensor signal pnp
5	DC Sensor supply (L+)
6	DC Sensor supply (L-)
7	AC supply voltage (L)
8	AC supply voltage (N)
9	not used
10	sensor signal npn
11	reset pnp
12	transistor output pnp
13	relay common
14	relay normally open
15	relay normally closed
16	not used
17	not used
18	not used
19	not used
20	not used
21	not used
22	analogue output (mA)
23	analogue output (GND)
24	analogue output (V)