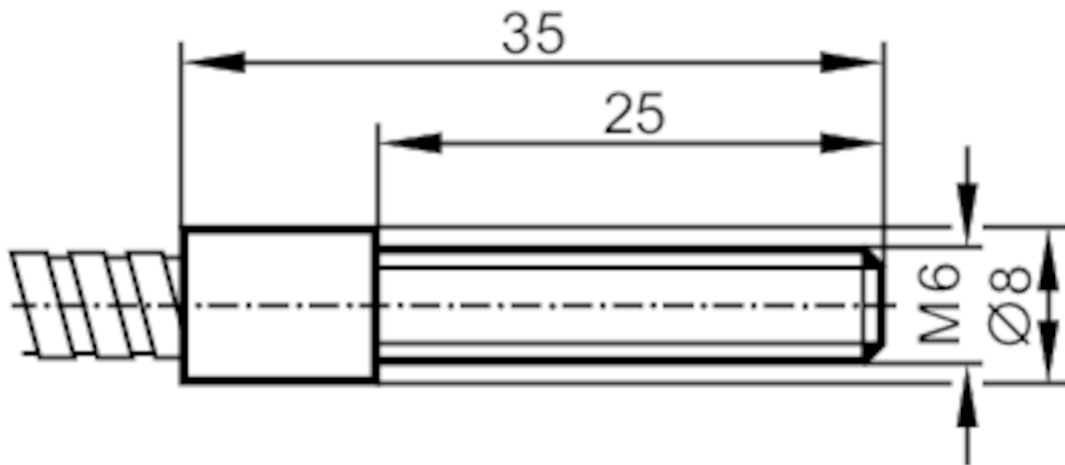


# E20160



## Fibre optic through-beam sensor

FE-30-A-A-M6



### Application

Function principle Through-beam sensor

### Detection zone

Range with fibre optic amplifier type OIF

### OIF

Range of fibre optics [mm] 300

### Operating conditions

Ambient temperature [°C] -40...290

### Mechanical data

Weight [g]	106
Version of sensing head	straight
Sensing head thread	M6
Total length [mm]	600
Min. bending radius [mm]	30; (for fixed installation)
Fibre arrangement	●
Materials	Adapter: PA
Fibre material	glass
Fibre head material	aluminium
Fibre sheath material	aluminium

# E20160



## Fibre optic through-beam sensor

FE-30-A-A-M6

Accessories	
Items supplied	hexagon nuts: 4 x M6, stainless steel
	tooth lock washers: 4
	knurled nut: 1 x M30
Remarks	
Pack quantity	1 pcs.