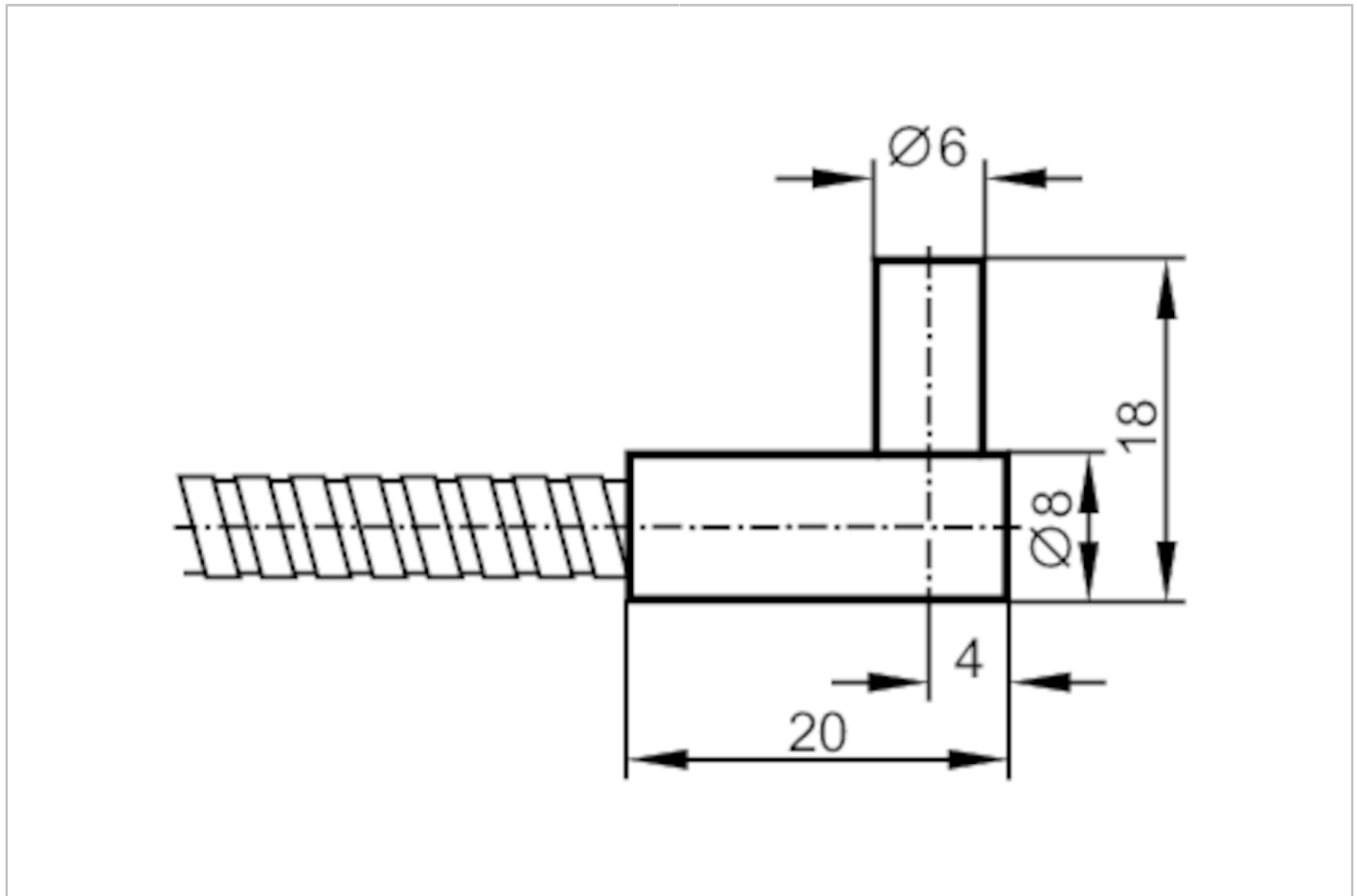


E20161



Fibre optic through-beam sensor

FE-30-A-A-R6



Application	
Function principle	Through-beam sensor
Detection zone	
Range with fibre optic amplifier type	OIF
OIF	
Range of fibre optics [mm]	300
Operating conditions	
Ambient temperature [°C]	-40...290
Mechanical data	
Weight [g]	113.5
Version of sensing head	angled
Sensing head diameter [mm]	6
Total length [mm]	600
Min. bending radius [mm]	30; (for fixed installation)
Fibre arrangement	●
Materials	Adapter: PA
Fibre material	glass
Fibre head material	aluminium
Fibre sheath material	aluminium

E20161



Fibre optic through-beam sensor

FE-30-A-A-R6

Accessories	
Items supplied	Mounting clamp., E10221
Remarks	
Pack quantity	1 pcs.