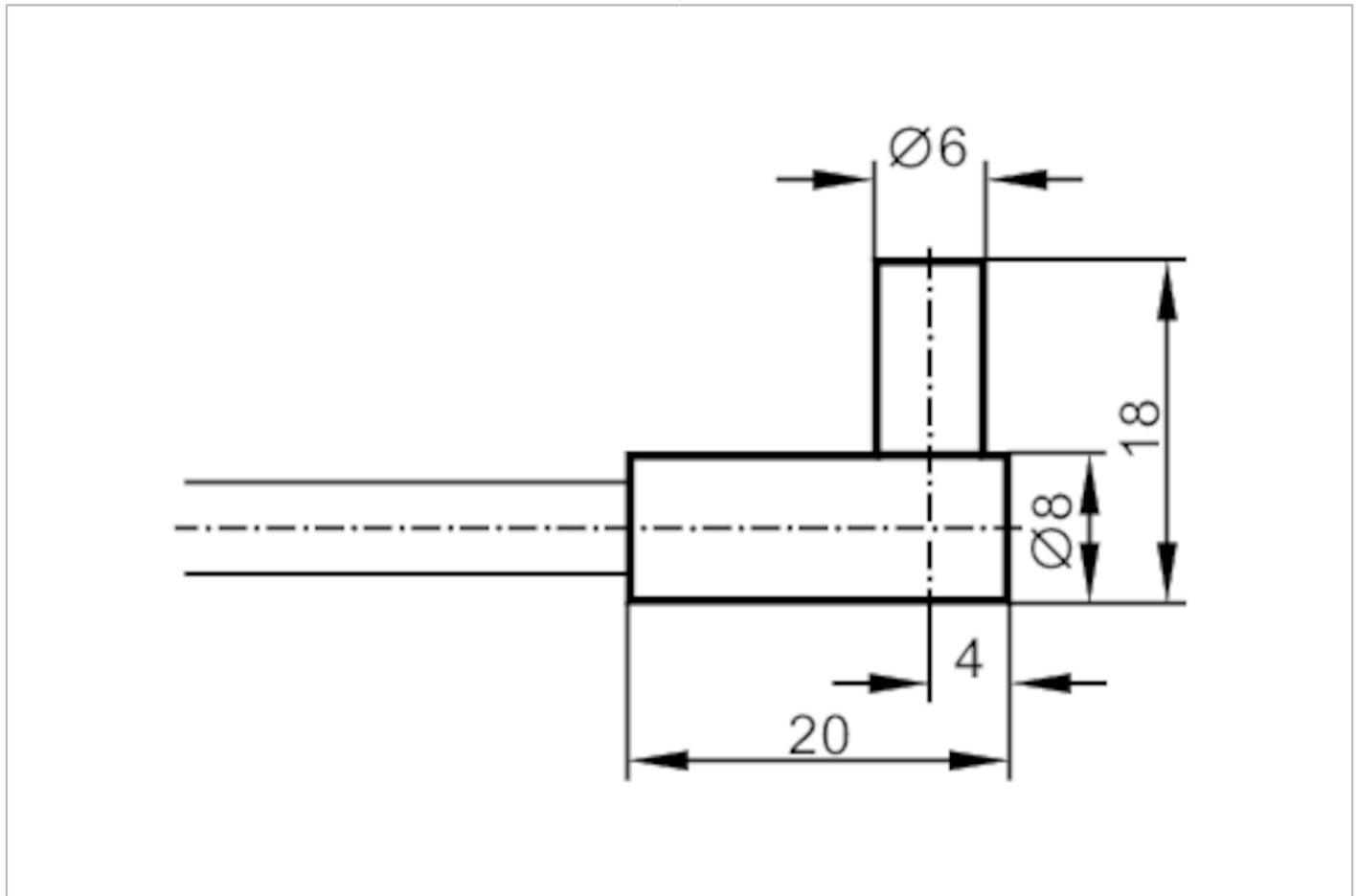




Fibre optic through-beam sensor

FE-30-P-A-R6



| Application | |
|---------------------------------------|---------------------|
| Function principle | Through-beam sensor |
| Detection zone | |
| Range with fibre optic amplifier type | OIF |
| OIF | |
| Range of fibre optics [mm] | 300 |
| Operating conditions | |
| Ambient temperature [°C] | -20...80 |
| Mechanical data | |
| Weight [g] | 107.5 |
| Version of sensing head | angled |
| Sensing head diameter [mm] | 6 |
| Total length [mm] | 600 |
| Min. bending radius [mm] | 30 |
| Fibre arrangement | ● |
| Materials | Adapter: PA |
| Fibre material | glass |
| Fibre head material | aluminium |
| Fibre sheath material | PVC |

E20165



Fibre optic through-beam sensor

FE-30-P-A-R6

| Accessories | |
|----------------|-------------------------|
| Items supplied | Mounting clamp., E10221 |
| Remarks | |
| Pack quantity | 1 pcs. |