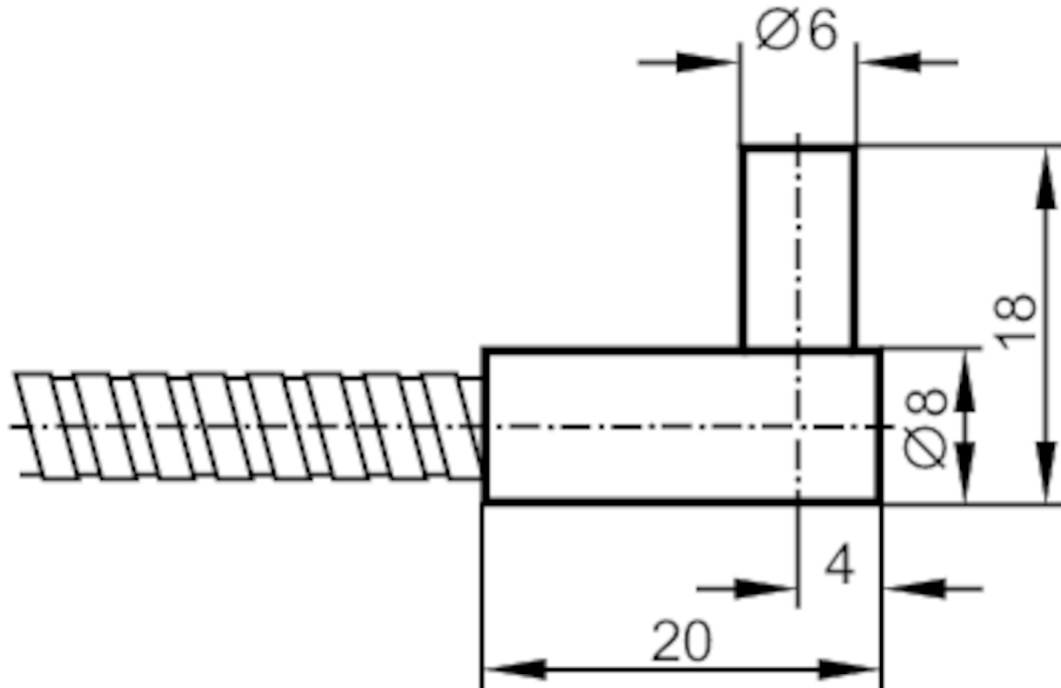


# E20339



## Fibre optic through-beam sensor

FE-30-A-A-R6/2M



### Application

Function principle Through-beam sensor

### Detection zone

Range with fibre optic amplifier type OIF

### OIF

Range of fibre optics [mm] 240

### Operating conditions

Ambient temperature [°C] -40...290

### Mechanical data

|                            |                              |
|----------------------------|------------------------------|
| Weight [g]                 | 201                          |
| Version of sensing head    | angled                       |
| Sensing head diameter [mm] | 6                            |
| Total length [mm]          | 2000                         |
| Min. bending radius [mm]   | 30; (for fixed installation) |
| Fibre arrangement          | ●                            |
| Materials                  | Adapter: PA                  |
| Fibre material             | glass                        |
| Fibre head material        | aluminium                    |
| Fibre sheath material      | aluminium                    |

# E20339



## Fibre optic through-beam sensor

FE-30-A-A-R6/2M

| Accessories    |                         |
|----------------|-------------------------|
| Items supplied | Mounting clamp., E10221 |
| Remarks        |                         |
| Pack quantity  | 1 pcs.                  |