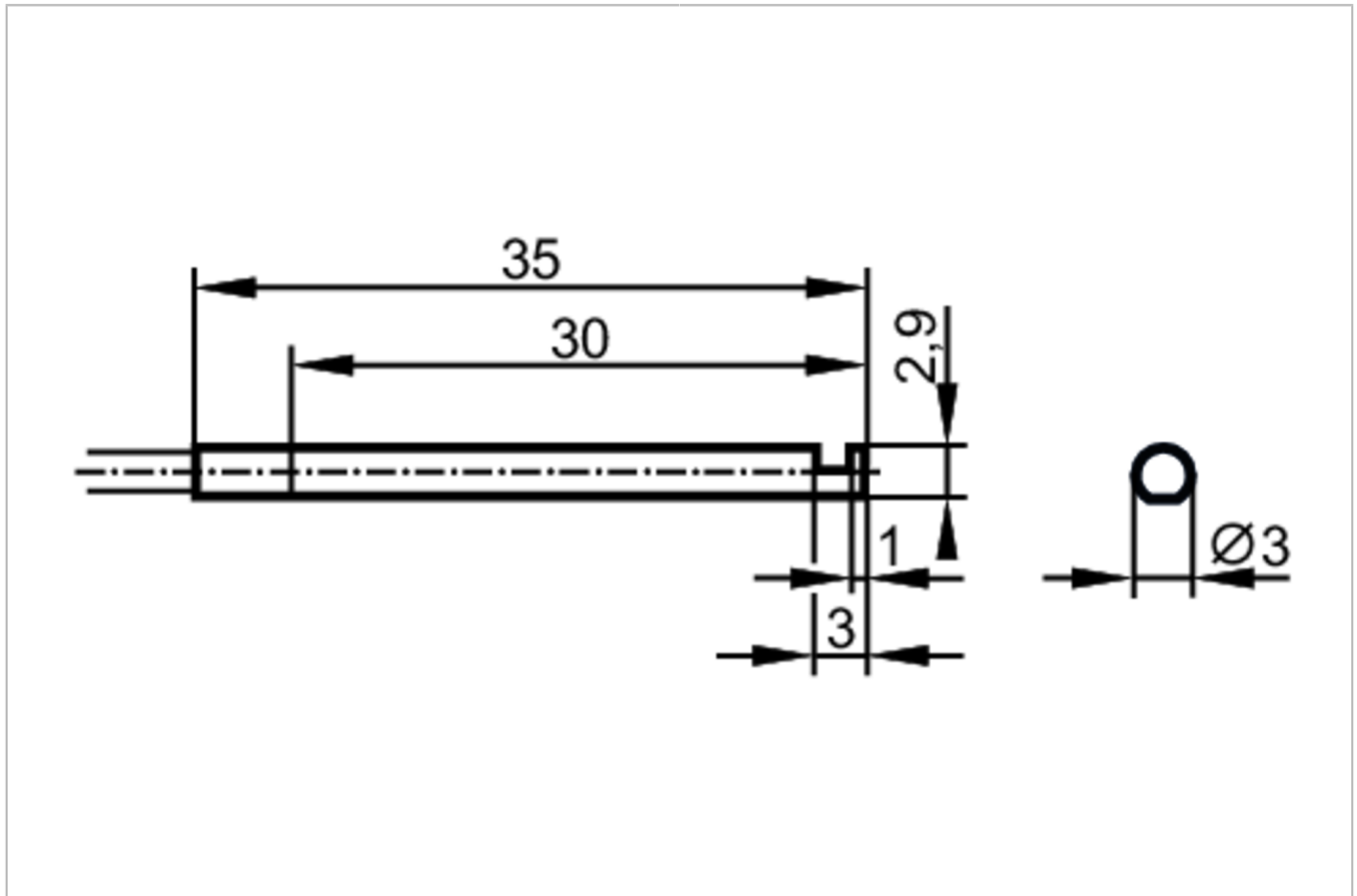


E20714



Fibre optic through-beam sensor

FE-11-E-V-E3R/2m



Application		
Design		90° deflection of the light beam
Function principle		Through-beam sensor
Detection zone		
Range with fibre optic amplifier type		OB50; OBF; OO50
OB50		
Range of fibre optics	[mm]	140
OBF		
Range of fibre optics	[mm]	230
OO50		
Range of fibre optics	[mm]	400
Operating conditions		
Ambient temperature	[°C]	-40...70

E20714



Fibre optic through-beam sensor

FE-11-E-V-E3R/2m

Mechanical data	
Weight [g]	58.5
Version of sensing head	angled
Sensing head diameter [mm]	3
Total length [mm]	2000
Min. bending radius [mm]	25
Fibre arrangement	●
Fibre material	PMMA
Fibre head material	stainless steel (1.4305 / 303)
Fibre sheath material	PE
Accessories	
Items supplied	Mounting clamp:, E20107
Remarks	
Pack quantity	1 pcs.