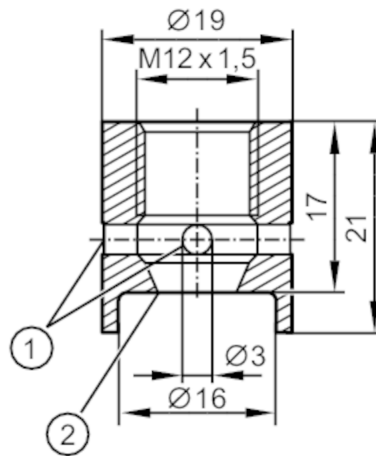


# E30152



## Welding adapter for process sensors

ADAPT M12-WELDING 3A ACCESSORY



- 1 Leakage port
- 1 sealing edge

EC 1935/2004 EHEDG Certified 

Application	
Design	with leakage port
Medium temperature [°C]	< 250
Pressure rating [bar]	50
Mechanical data	
Weight [g]	31.8
Materials	stainless steel (1.4404 / 316L)
Tightening torque [Nm]	5...20
Sensor connection	M12 x 1,5 sealing cone
Process connection	welding adapter Ø 19 mm
Remarks	
Pack quantity	1 pcs.