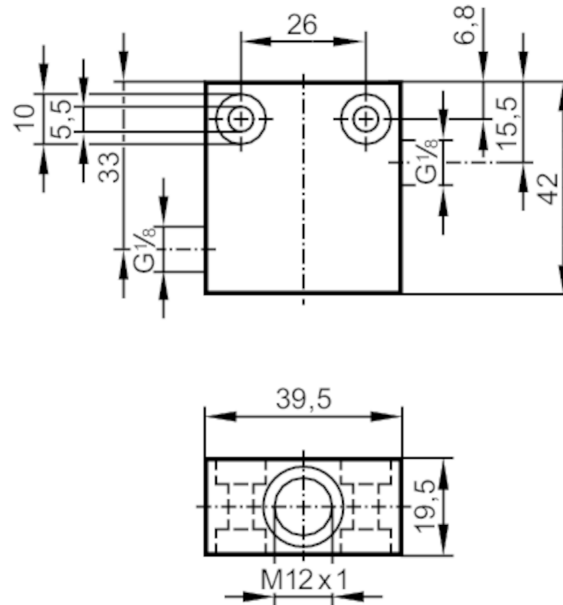


E40434



Process adapter for small volumetric flow quantities

FLOW ADAPT



Application	
Application	for industrial applications
Installation	via internal G1/8A male thread, any mounting position; (SA5)
Medium temperature [°C]	0...80
Pressure rating [bar]	100
Measuring/setting range	
Flow range [ml/min]	2...150
Tests / approvals	
Pressure Equipment Directive	Sound engineering practice; can be used for group 2 fluids; group 1 fluids on request
Mechanical data	
Weight [g]	212.7
Materials	stainless steel (1.4404 / 316L)
Sensor connection	M12 x 1
Process connection	G 1/8
Accessories	
Items supplied	sealings: 1, U-seal
Accessories (optional)	Adapter: ≤ 30 bar, E40101
	Adapter: ≤ 300 bar, E40236
Remarks	
Pack quantity	1 pcs.