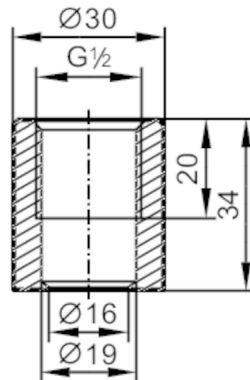


# E43300



## Welding adapter for process sensors

ADAPT G1/2-WELDING SLEEVE



CRN EC 1935/2004 EHEDG Certified **FCM** 

### Application

Design		for tanks
Pressure rating	[bar]	50
Note on pressure rating		for the connection sensor - adapter
MAWP (for applications according to CRN)	[bar]	75

### Mechanical data

Weight	[g]	168.5
Materials		stainless steel (1.4435 / 316L)
Sensor connection		G 1/2 sealing cone
Process connection		welding adapter Ø 30 mm
Surface characteristics Ra/Rz of the wetted parts		0.4 / 4

### Accessories

Items supplied		O-rings:, FKM
----------------	--	---------------

### Remarks

Pack quantity		1 pcs.
---------------	--	--------