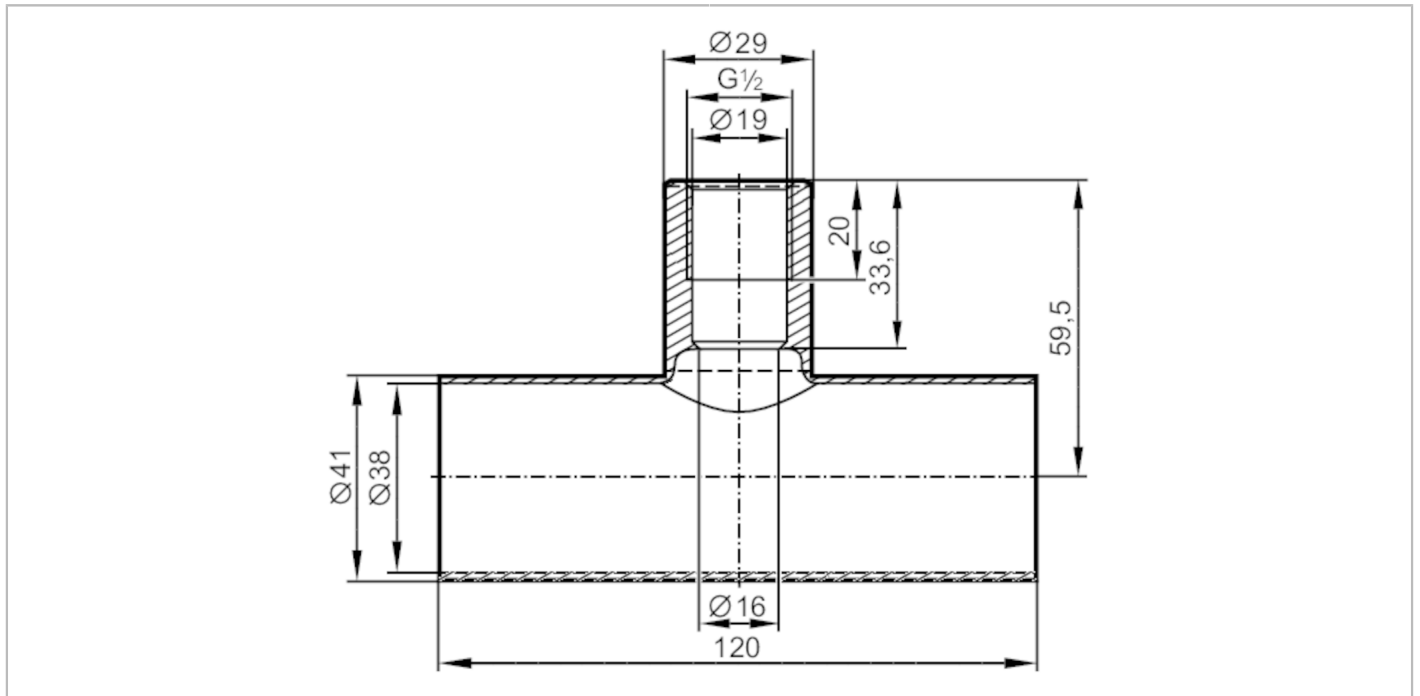


E43317



T-piece

T-PIPE/G1/2/L120/DN40



EC 1935/2004 EHEDG Certified **FCM**

Application	
Design	for sensors and adapters with process connection G 1/2 A
Pressure rating [bar]	25
Mechanical data	
Weight [g]	407.5
Materials	stainless steel (1.4404 / 316L)
Sensor connection	G 1/2 sealing cone
Process connection	welding adapter Ø 41 mm
Surface characteristics Ra/Rz of the wetted parts	0.8 / 4
Accessories	
Items supplied	O-ring: 1, FKM
Remarks	
Pack quantity	1 pcs.