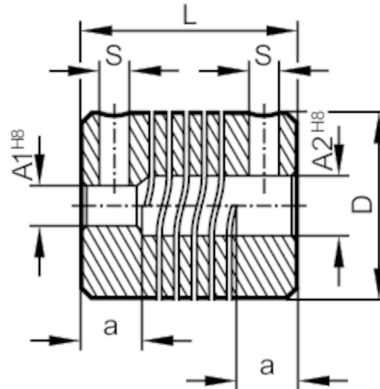


E60062



Flexible coupling for encoders

COUPLING 19,2-4-6-22-SV



Mechanical data	
Weight	[g] 14.8
Dimensions	[mm] $\varnothing 19 / L = 22$
Materials	aluminium
External diameter D	[mm] 19
Inside diameter A1	[mm] 4
Inside diameter A2	[mm] 6
Length L	[mm] 22
Depth of the clamping hub	[mm] 6
Clamp screw	[mm] M3
Max. revolution, mechanical	[U/min] 8000
Max. axial shaft misalignment	[mm] $\pm 0,4$
Max. radial shaft misalignment	[mm] $\pm 0,25$
Max. angular displacement	[°] $\pm 3,5$
Remarks	
Remarks	The data indicated apply to couplings with the above hub borings at an ambient temperature of 23 °C. The values of radial, angular and axial displacement are maximum values which must not reach their maximum simultaneously while in operation.
Pack quantity	1 pcs.