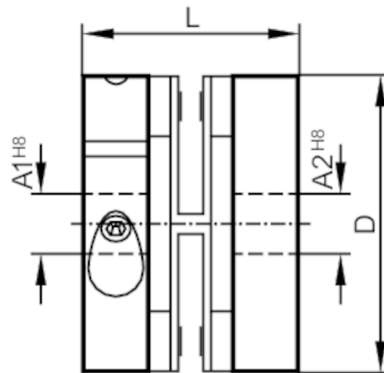


Spring disc coupling electrically isolating

SPRING COUPLING 30-10-10-22



Mechanical data	
Weight	[g] 29.9
Dimensions	[mm] $\varnothing 30 / L = 22$
Materials	aluminium; PA
Tightening torque	[Nm] tightening torque screws: 100 Ncm; Spring disc coupling: 60 Ncm
External diameter D	[mm] 30
Inside diameter A1	[mm] 10
Inside diameter A2	[mm] 10
Length L	[mm] 22
Max. revolution, mechanical	[U/min] 12000
Max. axial shaft misalignment	[mm] $\pm 0,4$
Max. radial shaft misalignment	[mm] $\pm 0,3$
Max. angular displacement	[°] $\pm 2,5$
Rigidity of the torsion spring	[Nm/rad] 50
Remarks	
Remarks	The data indicated apply to couplings with the above hub borings at an ambient temperature of 23 °C. The values of radial, angular and axial displacement are maximum values which must not reach their maximum simultaneously while in operation.
Pack quantity	1 pcs.