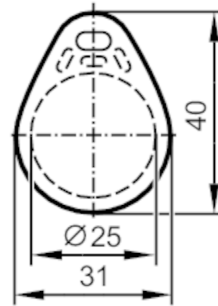


E80387



RFID tag

ID-TAG/Tear Shape/06



Application		
Application	coding of workpiece carriers in routing conveyors	
Electrical data		
Operating frequency	[MHz]	13,56
Memory size	[bit]	896
Memory type		EEPROM
Chip type		ICODE SLIX
Number of blocks		28
Block size	[Byte]	4
Unique Identification Number (UID)	[Byte]	8
RFID standard		ISO 15693
Max. read cycles		unlimited
Max. write cycles		100000
Operating conditions		
Ambient temperature	[°C]	-25...55
Storage temperature	[°C]	-25...75
Protection		IP 66
Tests / approvals		
Shock resistance	DIN IEC 68-2-27	40 g 18 ms
Vibration resistance	DIN IEC 68-2-6	10 g 10...2000 Hz
Radio approval	ISO 15693	
Mechanical data		
Weight	[g]	21
Type of mounting	installation on non-metal materials; (fixing eyelet)	
Dimensions	[mm]	40 x 31 x 4.8
Materials	ABS	
Remarks		
Pack quantity	5 pcs.	

E80387



RFID tag

ID-TAG/Tear Shape/06

Other data

read distance (mm)

ANT410 / DTI410	10
ANT411 / DTI411	20
ANT420 / DTI420 / DTM424 / DTI424 / DTM426	15
ANT421 / DTI421 / DTM425 / DTI425 / DTM427	40
ANT430 / DTI430 / DTM434 / DTI434 / DTM436	30
ANT431 / DTI431 / DTM435 / DTI435 / DTM437	45
ANT513 / DTI513 / DTC510	60
ANT515 / DTI515 / ANT516 / DTI516	30
ANT600 / DTI600	80