

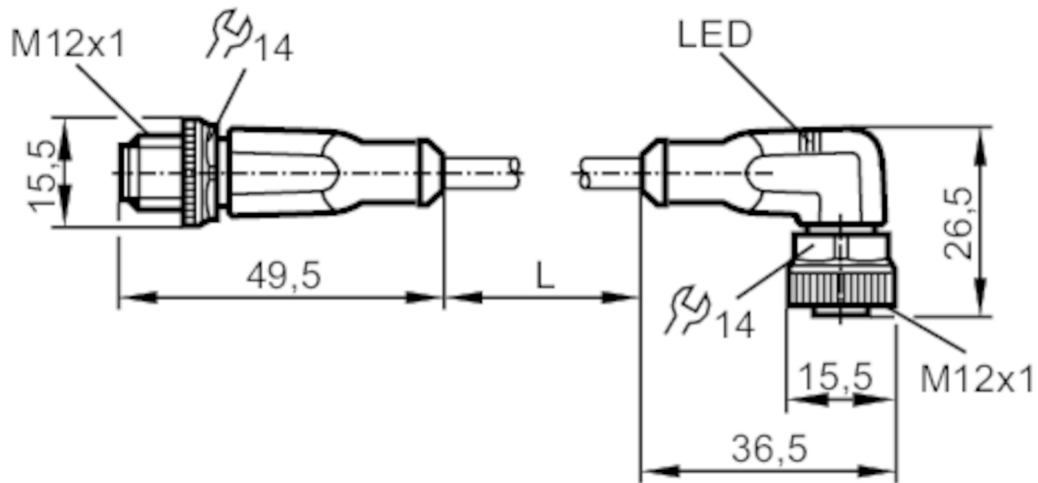
# EVC107



## Connection cable

VDOAH032MSS0007H03STGH030MSS

Please see the technical note under "Downloads"



### Application

|                    |  |
|--------------------|--|
| Special feature    | Free from silicone; Halogen-free; Gold-plated contacts; Drag chain suitability |
| Free from silicone | yes  |

### Electrical data

|                         |     |            |
|-------------------------|-----|------------|
| Operating voltage       | [V] | 10...36 DC |
| Protection class        |     | II         |
| Max. current load total | [A] | 4          |

### Outputs

|                   |     |
|-------------------|-----|
| Electrical design | PNP |
|-------------------|-----|

### Operating conditions

|                                      |      |                             |
|--------------------------------------|------|-----------------------------|
| Ambient temperature                  | [°C] | -25...90                    |
| Note on ambient temperature          |      | cULus: ...75                |
| Ambient temperature (moving)         | [°C] | -25...90                    |
| Note on ambient temperature (moving) |      | cULus: ...75                |
| Protection                           |      | IP 65; IP 67; IP 68; IP 69K |

### Tests / approvals

|      |         |      |
|------|---------|------|
| MTTF | [years] | 2027 |
|------|---------|------|

# EVC107



## Connection cable

VDOAH032MSS0007H03STGH030MSS

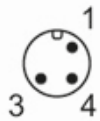
| Mechanical data        |   |  |
|------------------------|---|--|
| Weight [g]             | 238.2                                       |  |
| Dimensions [mm]        | 15.5 x 15.5 x 49.5                          |  |
| Moulded-body material  | TPU / TPU                                   |  |
| Material nut           | brass, nickel-plated / brass, nickel-plated |  |
| Sealing material       | FKM   |  |
| Drag chain suitability | yes   |  |
| Drag chain suitability | bending radius for flexible use             | min. 10 x cable diameter   |
|                        | travel speed                                | max. 3.3 m/s for a horizontal travel length of 5 m and max. acceleration of 5 m/s <sup>2</sup> |
|                        | bending cycles                              | > 5 Mio.   |
|                        | torsional strain                            | ± 180 °/m  |

| Displays / operating elements |                  |                 |
|-------------------------------|------------------|-----------------|
| Display                       | switching status | 1 x LED, yellow |
|                               | operation        | 1 x LED, green  |

| Remarks       |   |
|---------------|---|
| Notes         | Please see the technical note under "Downloads" |
| Pack quantity | 1 pcs.  |

### Electrical connection - plug

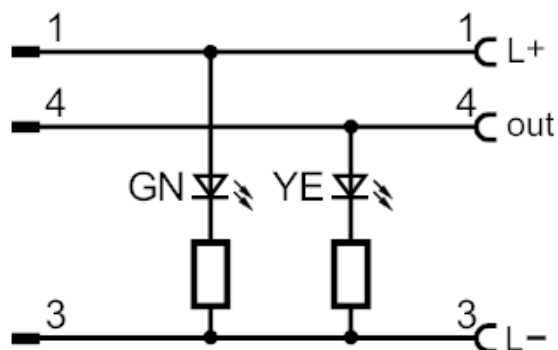
Connector: 1 x M12, straight; Moulded body: TPU, orange; Locking: brass, nickel-plated; Contacts: gold-plated; Tightening torque: 0.6...1.5 Nm



### Electrical connection

Cable: 7 m, PUR, Halogen-free, black, Ø 4.3 mm; 3 x 0.34 mm<sup>2</sup> (42 x Ø 0.1 mm)

### Connection



# EVC107



## Connection cable

VDOAH032MSS0007H03STGH030MSS

### Electrical connection - socket

Connector: 1 x M12, angled; Moulded body: TPU, black transparent; Locking: brass, nickel-plated; Sealing: FKM; Contacts: gold-plated; Tightening torque: 0.6...1.5 Nm

