

ifm electronic



Installation Guide

efector800[®]

USB/RS485 converter
for efector octavis

E30098 / E30100

Function and Features

- To connect efector octavis vibration monitors with RS485 interface to PC (Notebook) via PC USB port (USB 2.0 compatible)
- Driver installation procedure for Win2000

Electrical connection

USB cable

UL 2725, 2 x AWG 24, 2 x AWG 28, double shielded, connector: A
length approx. 1.5m (E30098); 1.5m (E30100)

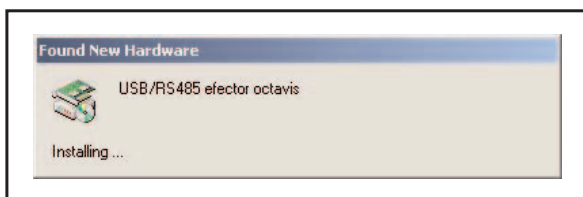
M8 socket

Protection rating: IP68, material body: PUR; material nut: brass, nickel-plated,
connection: PUR-cable, free from halogen

5m (E30098) / 0.2m (E30100); 4x0.25mm²; d=5mm

Installation procedure for Windows 2000

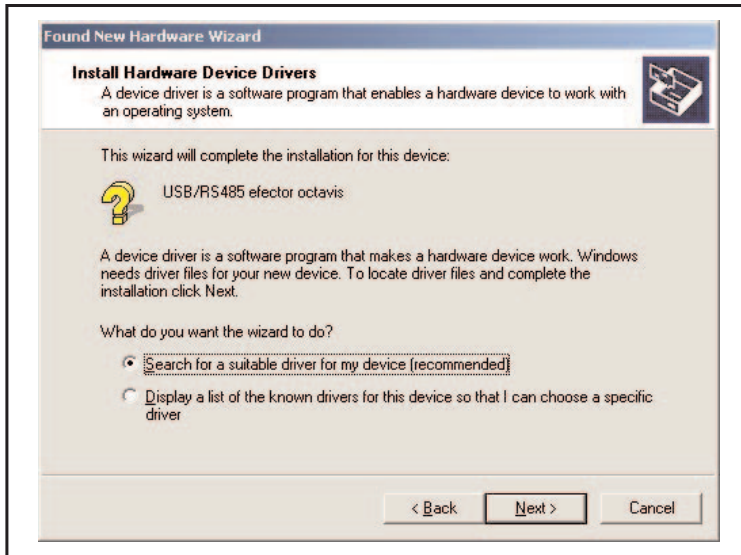
The following window appears when connecting the USB/RS485 converter efector octavis to the PC USB port for the first time:



The hardware wizard starts-up automatically.

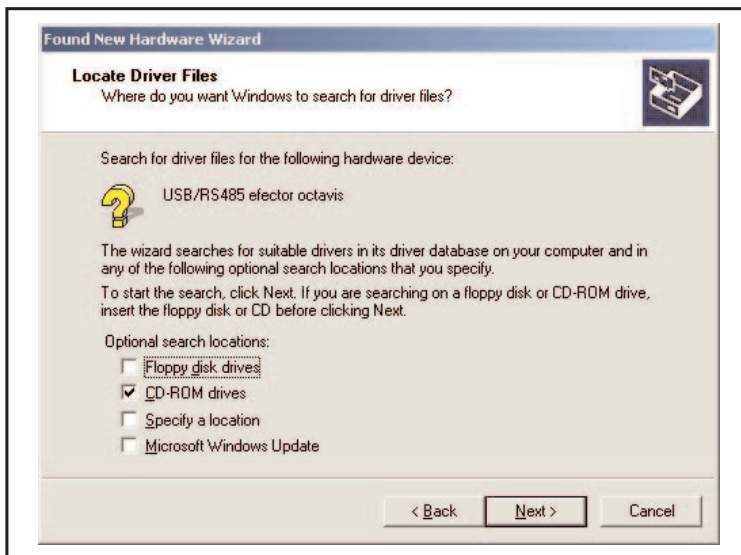


click „Next“



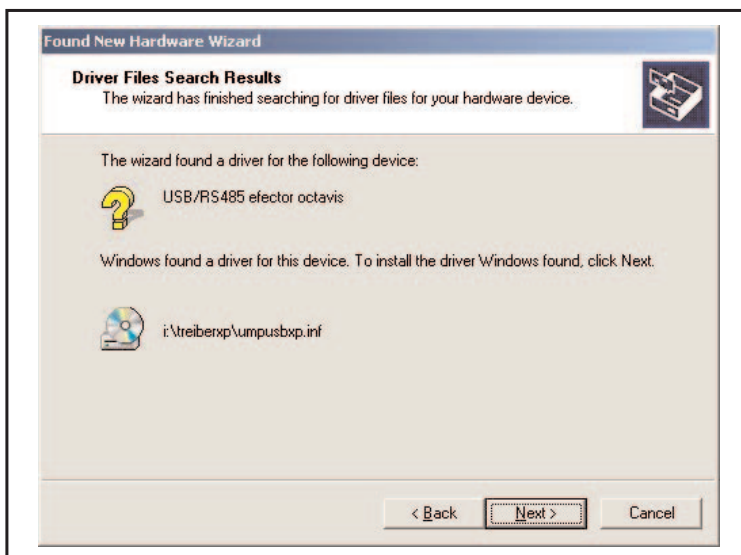
click „Next“

Select driver data from the supplied CD-ROM "USB/RS485 efactor octavis CD".

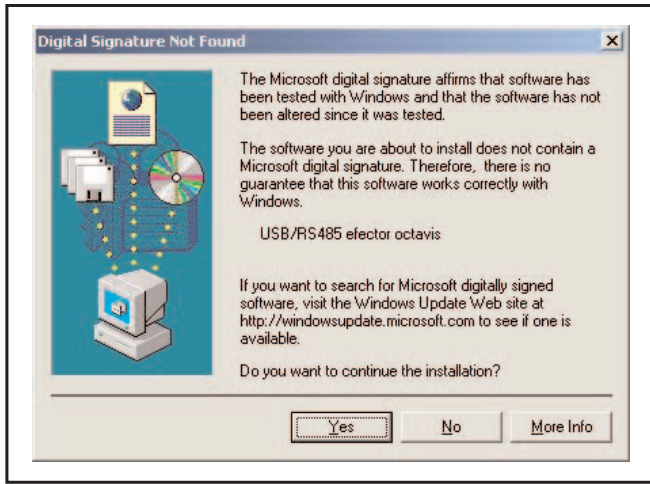


click „Next“

The driver required to set-up the unit is automatically recognised.



click „Next“

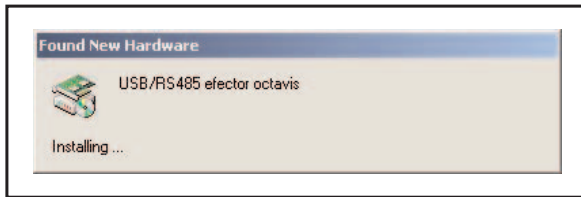


click „Yes“



To complete the driver installation procedure please click „Finish“.

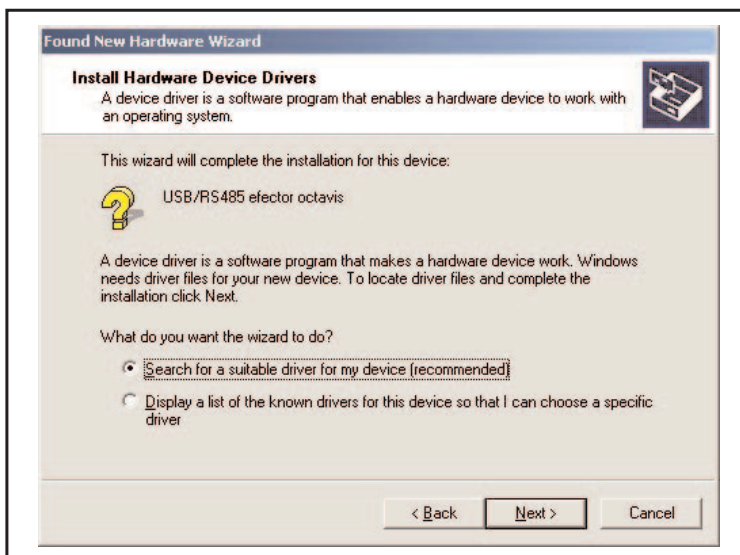
The hardware assistant is opened automatically.
Now install the driver for the virtual COM-port.



The hardware starts-up automatically.

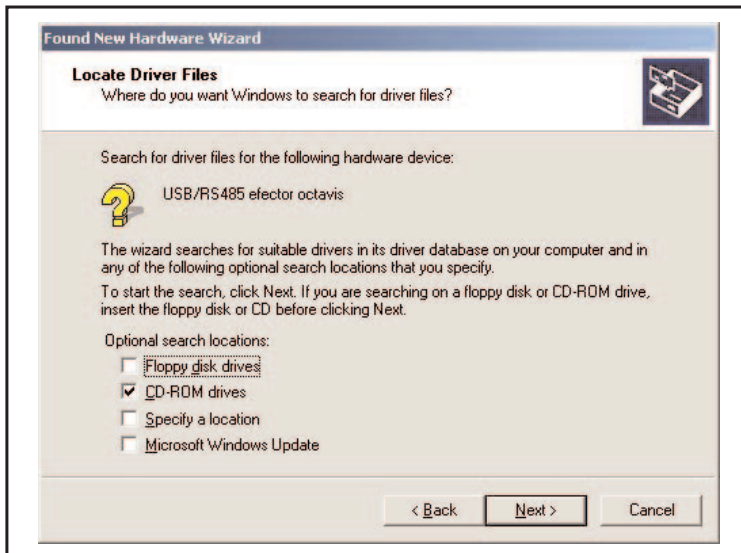


click „Next“



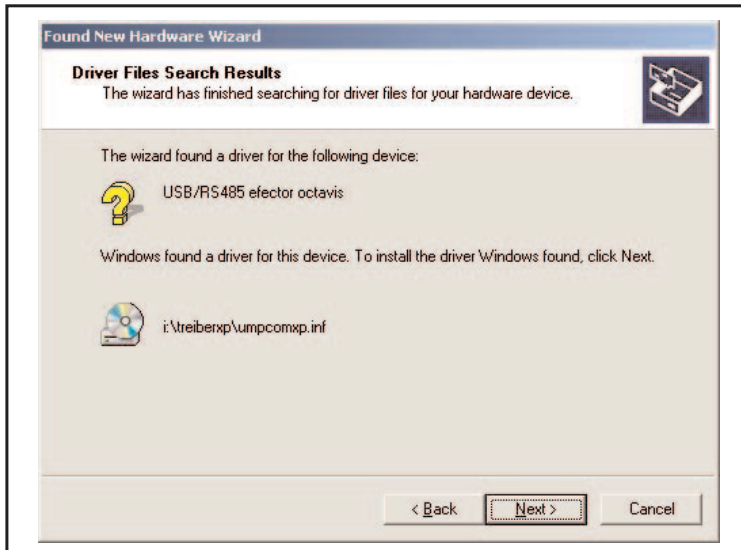
click „Next“

Select driver data from the supplied CD-ROM "USB/RS485 efector octavis CD".



click „Next“

The driver required to set-up the unit is automatically recognised.

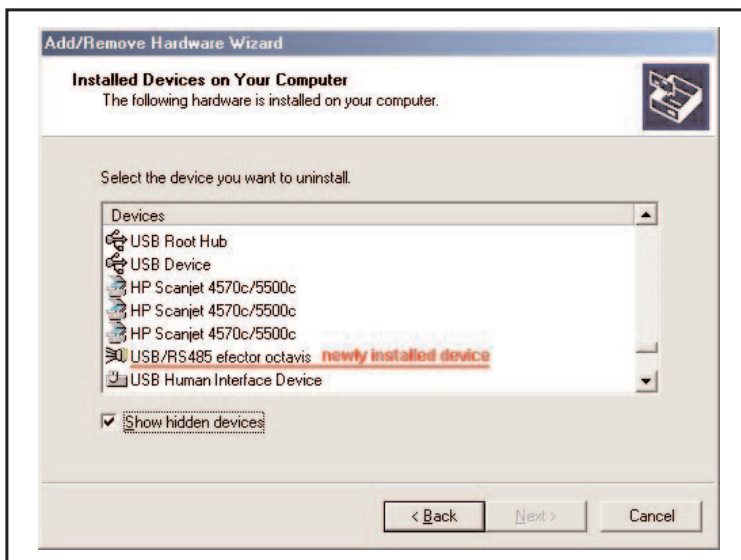
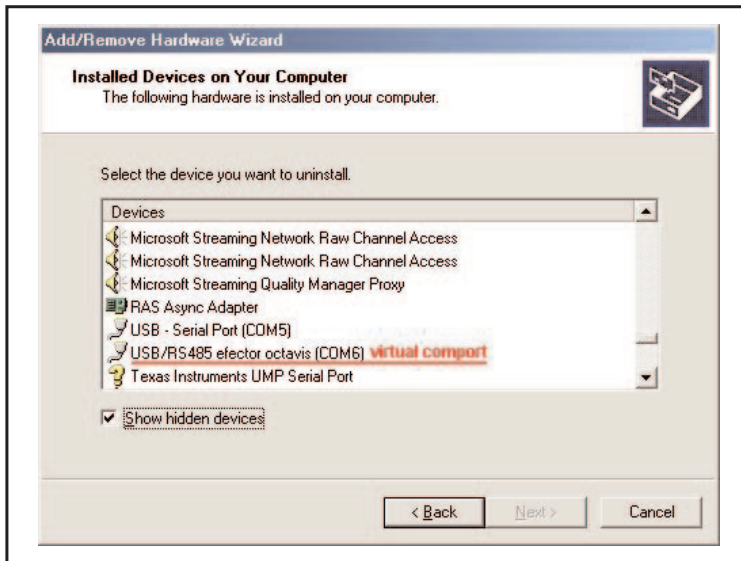


click „Next“



To complete the driver installation click „Finish“.

After the driver has been installed successfully the hardware wizard displays the USB/RS485 efector octavis and the virtual COM-port as follows:



The user can now access this virtual COM-port in the efector octavis software under the number (next free COM-port number) given in the hardware manager. This COM-port is used to communicate with efector octavis, as soon as the USB/RS485 efector octavis is connected to the PC USB-port.