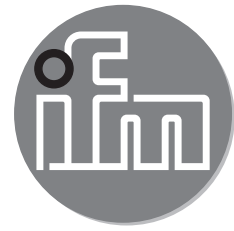


ifm electronic



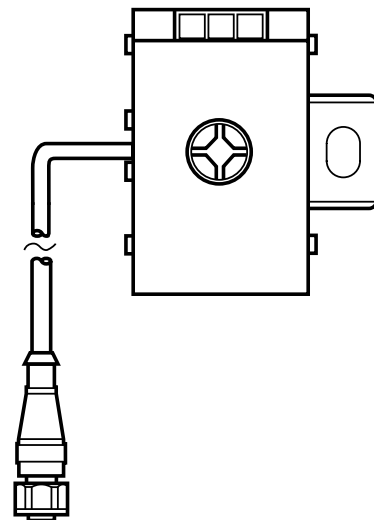
Installation instructions
FC insulation displacement connector

AS interface

UK

E70481

7390761 / 02 04 / 2011



1 Safety instructions

- Please read the product description prior to set-up of the unit. Ensure that the product is suitable for your application without any restrictions.
- The unit conforms to the relevant regulations and EC directives.
- Improper or non-intended use may lead to malfunctions of the unit or to unwanted effects in your application.
- That is why installation, electrical connection, set-up, operation and maintenance of the unit must only be carried out by qualified personnel authorised by the machine operator.

2 Functions and features

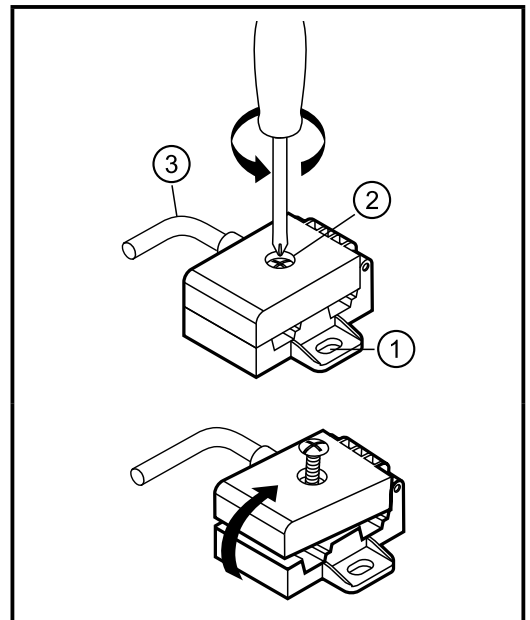
The FC insulation displacement connector carries the AS-i voltage and the external 24 V supply from the flat cable to the M12 socket.

- Current rating 4 A.

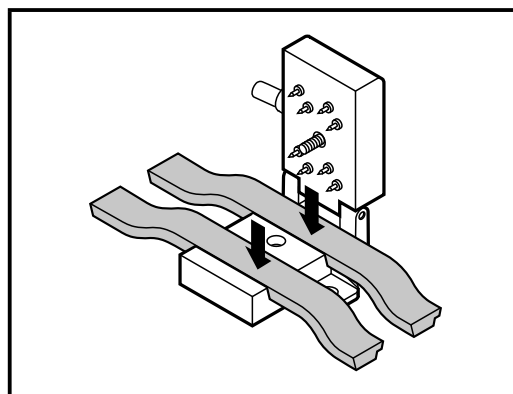
3 Installation

- ▶ Disconnect power.
- ▶ Choose a flat mounting surface and fix the insulation displacement connector on it (mounting hole 1). The mounting screw is not supplied.
- ▶ Loosen screw 2 (included) and open the passive splitter.


- 1: Mounting hole
- 2: Screw (tightening torque 1.65 Nm)
- 3: Connection cable with M12 socket

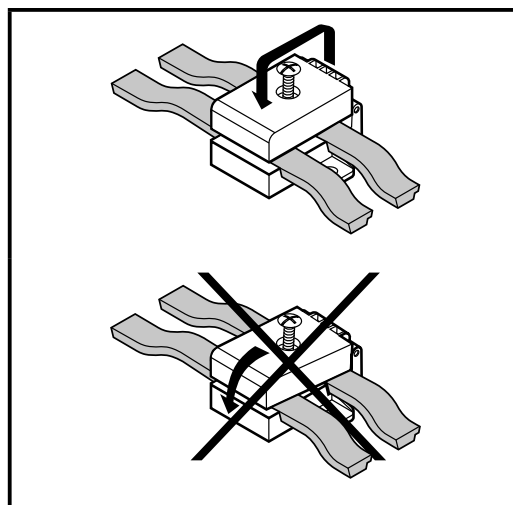


- ▶ Insert the yellow AS-i flat cable for the AS-i voltage in the flat cable duct marked yellow.
- ▶ Insert the black cable for the external auxiliary voltage in the other flat cable duct.
- ▶ Place the cable correctly in the profile slot.



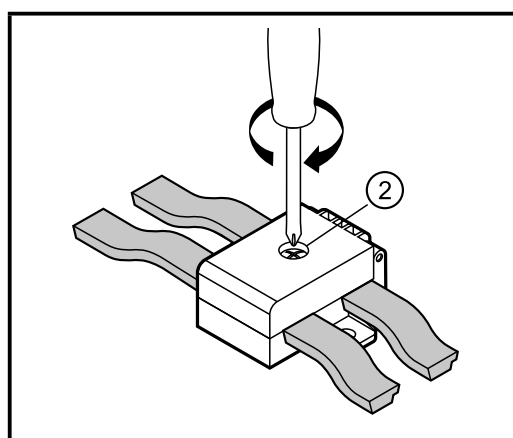
- ▶ Close upper part.

 First lift the upper part, then place it parallel to the lower part so that the upper part is not jammed. This ensures that the contacts pierce the flat cable vertically.



UK

- ▶ Press the upper part against the lower part and firmly tighten screw 2. Tightening torque 1.65 Nm.



- ▶ Seal open flat cable ends using the flat cable seal (E70413, to be ordered separately) to ensure the protection rating.

Technical data and further information at
www.ifm.com → Select your country → Data sheet search