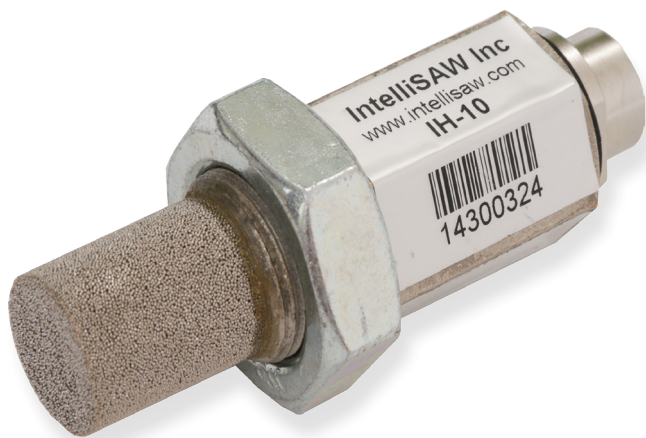


CRITICAL ASSET MONITORING

HUMIDITY SENSOR



FEATURES

- Relative humidity and ambient temperature
- Designed for electrical critical asset environments
- 4kV surge protection
- Multi-drop bus for up to 8 series connected sensors

Preventing Flashovers

The IntelliSAW Humidity Sensor provides real-time, continuous monitoring of electrical power critical assets to identify the potential for flashover. The sensor's sintered cap, threaded body, water resistant M12 connector, and 4kV surge protection provides the level of packaging robustness required for reliable operation in harsh environments. The IntelliSAW Critical Asset Monitoring (CAM) platform units allows up to 8 humidity sensors to be bussed together for multiple location installations such as along a bus duct.

SPECIFICATIONS

HUMIDITY MEASUREMENTS

Range	0 to 100% Relative Humidity (%RH)
Resolution	± 0.1 %RH
Accuracy	
Standard Range (20 to 80%RH)	± 4.5 %RH
Full Range	± 7.5 %RH
Repeatability	± 0.2 %RH
Long-term Drift	< 0.5 %RH/yr

AMBIENT TEMPERATURE MEASUREMENTS

Range	-25°C to +120°C
Resolution	± 0.1°C
Accuracy	± 2.5°C
Repeatability	± 0.2°C
Long-term Drift	< 0.1°C/yr

PHYSICAL

Material	304 Stainless steel
Sintered Cap Material	Nickel plated bronze
Weight	0.1 kg (3.5 oz)
International Protection (IEC 60529)	Connector side (IP 67), Cap side (IP 50)
Dielectric Strength	4 kV
Dimensions	28 W x 28 H x 80 mm D
Operating Conditions	Connector side: -20°C to +70°C

MOUNTING & CONNECTORS

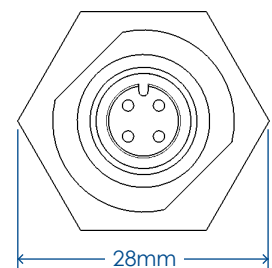
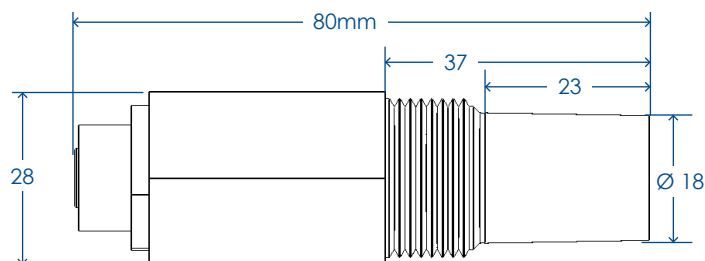
Body Thread	M22 x 1.5 thread (nut included)
Body	24 mm hex body
Connector	M12, 4-pole socket



Industrie
Canada Industry
Canada



MECHANICAL



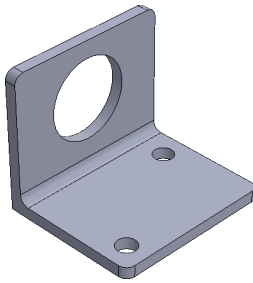
CABLES

IntelliSAW cables use UL style 2464, (80C, 300V) communication cable assembled with the required connectors to interface between a humidity sensor and an IntelliSAW CAM-4 or Reader.

MOUNTING

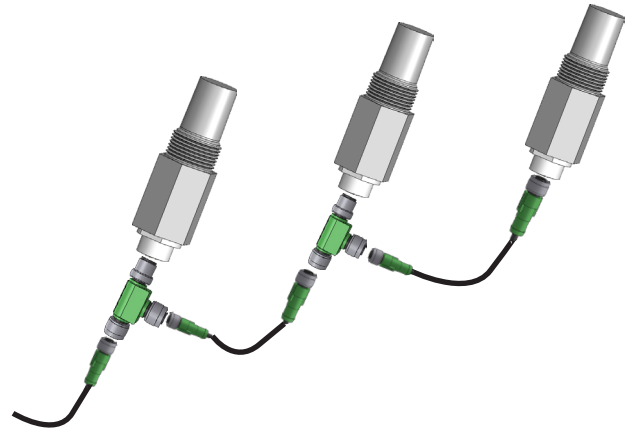
Panel Mount: The sensor body can be inserted into a 22.5mm punch out and fastened with a M22 x 1.5 thin hex nut.

Bracket Mount: The sensor can be connected to a bracket for alternative mounting methods. Bracket size: 44.5 W x 38 H x 38mm L



BUSSED SENSORS

IntelliSAW monitoring units are capable of reading up to 8 bussted humidity sensors through sensor addressing. The following is an example of 3 humidity sensors being bussted.

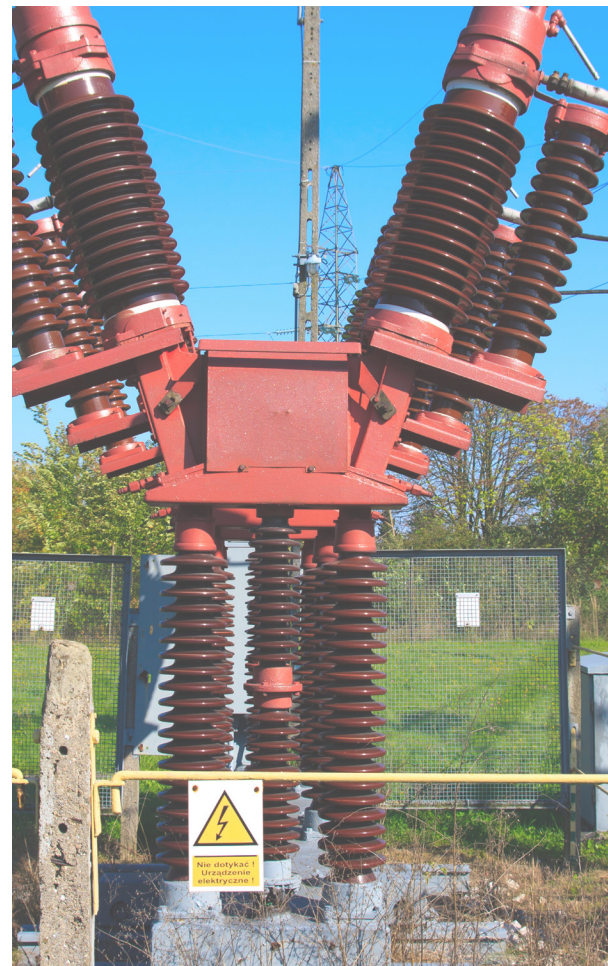


SAFETY

IntelliSAW systems are installed in close proximity to medium and high voltage electric power equipment. Qualified personnel need to observe industry standard safety practices that will protect the systems and operators from harm due to induced voltages. Proper antenna installation and system safety grounding is crucial to operator safety and system reliability.

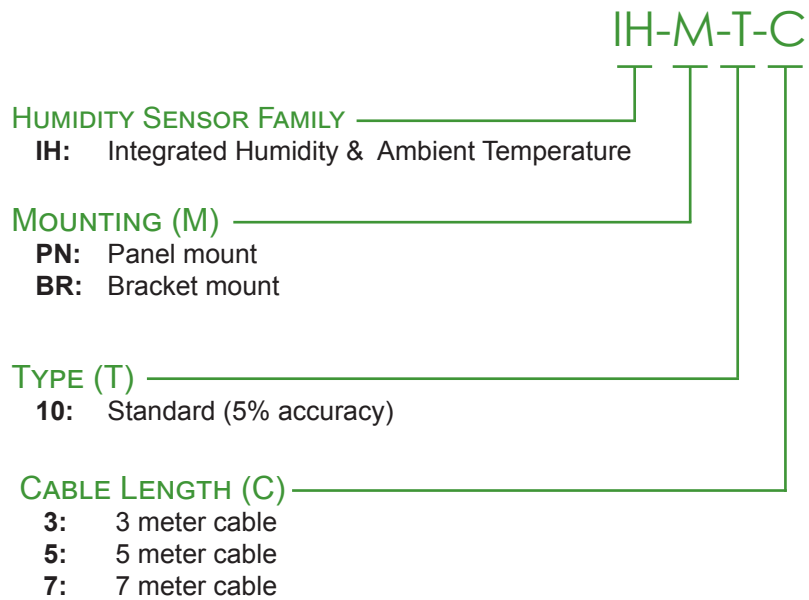
HOMOLOGATION

System integrators and installers are responsible for adhering to all regional regulations concerning the import, installation and operation of IntelliSAW Critical Asset Monitoring systems.



MODEL NUMBERS

Not all model combinations are stocked, please contact sales before ordering.



CONTACT

IntelliSAW Inc.

100 Burt Rd.
Andover, MA 01810
contact@intellisaw.com
+1.978.409.1534
www.intellisaw.com

IntelliSAW China

Suite 1542,
No.222 Hubin Road,
Luwan District Shanghai,
200021 PR China
+86.187.2152.3072

IntelliSAW LATAM

Calle 100 # 8a-55 Torre C Piso 10
Oficina 1005
Bogotá, Colombia
+57.1.646.7127/65

Visit www.intellisaw.com for regional distributor locations and details

